

# Mail Server

## Zimbra 7



Zimbra is an Open Source mail server that provides a complete mail solution. It includes features such as email, contacts, group calendaring, and more. Zimbra Desktop is available for Microsoft Outlook.

### Servers

- Minimum – 32-bit OS with Intel/AMD 2.0 GHZ+ CPU Recommended – 64-bit OS
- Minimum – 2 GB RAM Recommend minimum – 4 GB RAM
- Temp file space for installs and upgrades\*
- 10 GB free disk space for software and logs (SATA or SCSI for performance, and RAID/Mirroring for redundancy)
- Additional disk space for mail storage

### Operating System Network Edition

- Red Hat® Enterprise Linux
- SUSE Linux Enterprise Server
- Ubuntu 10.04 LTS Server Edition

File Systems ext3 file system for Linux deployments

the following:

- Internet Explorer 7.0 or 8.0
- Firefox 3.0, 3.5 or 3.6
- Safari 4 or 5
- Google Chrome 2.1, 2.2, or 2.3

Mac OS X 10.4, 10.5 or 10.6 with one of the following:

- Firefox 3.0, 3.5 or 3.6
- Safari 4 or 5
- Google Chrome 2.1, 2.2, or 2.3



```
[root@mail zcs-7.0.0_GA_3077.RHEL5_64.20110127201852]#  
./install.sh --platform-override
```

5.  **Zimbra**  Yes (  )

*Operations logged to /tmp/install.log.2223*

*Checking for existing installation...*

*zimbra-ldap...NOT FOUND  
zimbra-logger...NOT FOUND  
zimbra-mta...NOT FOUND  
zimbra-snmp...NOT FOUND  
zimbra-store...NOT FOUND  
zimbra-apache...NOT FOUND  
zimbra-spell...NOT FOUND  
zimbra-convertd...NOT FOUND  
zimbra-memcached...NOT FOUND  
zimbra-proxy...NOT FOUND  
zimbra-archiving...NOT FOUND  
zimbra-cluster...NOT FOUND  
zimbra-core...NOT FOUND*

*PLEASE READ THIS AGREEMENT CAREFULLY BEFORE USING THE SOFTWARE.*

*ZIMBRA, INC. ("ZIMBRA") WILL ONLY LICENSE THIS SOFTWARE TO YOU IF YOU*

*FIRST ACCEPT THE TERMS OF THIS AGREEMENT. BY DOWNLOADING OR INSTALLING*

*THE SOFTWARE, OR USING THE PRODUCT, YOU ARE CONSENTING TO BE BOUND BY*

*THIS AGREEMENT. IF YOU DO NOT AGREE TO ALL OF THE TERMS OF THIS*

*AGREEMENT, THEN DO NOT DOWNLOAD, INSTALL OR USE THE PRODUCT.*

*License Terms for the Zimbra Collaboration Suite:*

*[http://www.zimbra.com/license/zimbra\\_public\\_eula\\_2.1.html](http://www.zimbra.com/license/zimbra_public_eula_2.1.html)*

Do you agree with the terms of the software license agreement? [N] **y**

Checking for prerequisites...

FOUND: NPTL

FOUND: sudo-1.7.2p1-9

FOUND: libidn-0.6.5-1.1

FOUND: gmp-4.1.4-10

FOUND: /usr/lib64/libstdc++.so.6

Checking for suggested prerequisites...

FOUND: perl-5.8.8

MISSING: sysstat does not appear to be installed.

FOUND: sqlite

###WARNING###

The suggested version of one or more packages is not installed.

This could cause problems with the operation of Zimbra.

Do you wish to continue? [N] **y**

Prerequisite check complete.

Checking for installable packages

Found zimbra-core

Found zimbra-ldap

Found zimbra-logger

Found zimbra-mta

Found zimbra-snmp

Found zimbra-store

Found zimbra-apache

Found zimbra-spell

Found zimbra-memcached

Found zimbra-proxy

Select the packages to install

Install zimbra-ldap [Y] **y**

*Install zimbra-logger [Y] y*

*Install zimbra-mta [Y] y*

*Install zimbra-snmp [Y] y*

*Install zimbra-store [Y] y*

*Install zimbra-apache [Y] y*

*Install zimbra-spell [Y] y*

*Install zimbra-memcached [N] y*

*Install zimbra-proxy [N] y*

*Checking required space for zimbra-core  
checking space for zimbra-store*

*Installing:*

*zimbra-core*

*zimbra-ldap*

*zimbra-logger*

*zimbra-mta*

*zimbra-snmp*

*zimbra-store*

*zimbra-apache*

*zimbra-spell*

*zimbra-memcached*

*zimbra-proxy*

*You appear to be installing packages on a platform different  
than the platform for which they were built.*

*This platform is CentOS5\_64*

*Packages found: RHEL5\_64*

*This may or may not work.*

*Using packages for a platform in which they were not designed  
for*

*may result in an installation that is NOT usable. Your*

support

options may be limited if you choose to continue.

Install anyway? [N] **y**

The system will be modified. Continue? [N] **y**

Removing /opt/zimbra

Removing zimbra crontab entry...done.

done.

Cleaning up zimbra init scripts...done.

Cleaning up /etc/ld.so.conf...done.

Cleaning up /etc/prelink.conf...done.

Cleaning up /etc/security/limits.conf...done.

Finished removing Zimbra Collaboration Suite.

Installing packages

zimbra-core.....zimbra-

core-7.0.0\_GA\_3077.RHEL5\_64-20110127201852.x86\_64.rpm...done

zimbra-ldap.....zimbra-

ldap-7.0.0\_GA\_3077.RHEL5\_64-20110127201852.x86\_64.rpm...done

zimbra-logger.....zimbra-

logger-7.0.0\_GA\_3077.RHEL5\_64-20110127201852.x86\_64.rpm...done

zimbra-mta.....zimbra-

mta-7.0.0\_GA\_3077.RHEL5\_64-20110127201852.x86\_64.rpm...done

zimbra-snmp.....zimbra-

snmp-7.0.0\_GA\_3077.RHEL5\_64-20110127201852.x86\_64.rpm...done

zimbra-store.....zimbra-

store-7.0.0\_GA\_3077.RHEL5\_64-20110127201852.x86\_64.rpm...done

zimbra-apache.....zimbra-

apache-7.0.0\_GA\_3077.RHEL5\_64-20110127201852.x86\_64.rpm...done

zimbra-spell.....zimbra-

spell-7.0.0\_GA\_3077.RHEL5\_64-20110127201852.x86\_64.rpm...done

zimbra-memcached.....zimbra-

memcached-7.0.0\_GA\_3077.RHEL5\_64-20110127201852.x86\_64.rpm...done

zimbra-proxy.....zimbra-

```
proxy-7.0.0_GA_3077.RHEL5_64-20110127201852.x86_64.rpm...done
Operations logged to /tmp/zmsetup.02142011-111650.log
Installing LDAP configuration database...done.
Setting defaults...      MX: mx.fakemx.net (46.4.35.23)
```

```
Interface: 10.0.1.211
```

```
Interface: 127.0.0.1
```

```
46.4.35.23
```

```
46.4.35.23
```

```
DNS ERROR – none of the MX records for mail.rmutl.com
resolve to this host
```

```
Change domain name? [Yes] n ← ██████████████████████████████████████████████
██████████████████████ @test.com
done.
```

```
Checking for port conflicts
```

```
Port conflict detected: 25 (zimbra-mta)
```

```
Port conflicts detected! – Any key to continue
```

```
Main menu
```

```
1) Common Configuration:
```

```
2) zimbra-ldap: Enabled
```

```
3) zimbra-store: Enabled
```

```
+Create Admin User: yes
```

```
+Admin user to create: admin@mail.rmutl.com
```

```
***** +Admin Password UNSET
```

```
+Anti-virus quarantine user: virus-
quarantine.dhd8naot@mail.rmutl.com
```

```
+Enable automated spam training: yes
```

```
+Spam training user:
spam.jjt0i43dxw@mail.rmutl.com
```

```
+Non-spam(Ham) training user:
ham.zfdo_wqgzg@mail.rmutl.com
```

```
+SMTP host: mail.rmutl.com
```

```
+Web server HTTP port: 80
```

```
+Web server HTTPS port: 443
```

```
+Web server mode: http
```

```

+IMAP server port:           7143
+IMAP server SSL port:       7993
+POP server port:           7110
+POP server SSL port:       7995
+Use spell check server:    yes
+Spell server URL:
http://mail.rmutl.com:7780/aspell.php
+Enable version update checks:  TRUE
+Enable version update notifications:  TRUE
+Version update notification email:  admin@mail.rmutl.com
+Version update source email:       admin@mail.rmutl.com

```

- 4) zimbra-mta: Enabled
- 5) zimbra-snmp: Enabled
- 6) zimbra-logger: Enabled
- 7) zimbra-spell: Enabled
- 8) zimbra-proxy: Enabled
- 9) Default Class of Service Configuration:
- r) Start servers after configuration yes
- s) Save config to file
- x) Expand menu
- q) Quit

```

Address unconfigured (**) items (? - help) 3
████████████████████████████████████████████████████████████████████████████████
████████████████████████████████████████████████████████████████████████████████
████████████████████████████████████████████████████████████████████████████████
████████████████████████████████████████████████████████████████████████████████ 3

```

Store configuration

- 1) Status: Enabled
- 2) Create Admin User: yes
- 3) Admin user to create: admin@mail.rmutl.com
- \*\* 4) Admin Password UNSET
- 5) Anti-virus quarantine user: virus-quarantine.dhd8naot@mail.rmutl.com
- 6) Enable automated spam training: yes
- 7) Spam training user:



```

spam.jjt0i43dxw@mail.rmutl.com
8) Non-spam(Ham) training user:
ham.zfdo_wqgzg@mail.rmutl.com
9) SMTP host: mail.rmutl.com
10) Web server HTTP port: 80
11) Web server HTTPS port: 443
12) Web server mode: http
13) IMAP server port: 7143
14) IMAP server SSL port: 7993
15) POP server port: 7110
16) POP server SSL port: 7995
17) Use spell check server: yes
18) Spell server URL:
http://mail.rmutl.com:7780/aspell.php
19) Enable version update checks: TRUE
20) Enable version update notifications: TRUE
21) Version update notification email:
admin@mail.rmutl.com
22) Version update source email:
admin@mail.rmutl.com

```

Select, or 'r' for previous menu [r] 4 □□□□□□□□□□ **4** □□□□□  
□□□□□□□□□□□□□□□□

Password for admin@mail.rmutl.com (min 6 characters):  
[dKt1QlWQf] zaqwsx □□□□□□□□□□□□□□□□□□□□□□□□□□□□□□□□□□

Store configuration

```

1) Status: Enabled
2) Create Admin User: yes
3) Admin user to create:
admin@mail.rmutl.com
4) Admin Password set
5) Anti-virus quarantine user: virus-
quarantine.dhd8naot@mail.rmutl.com
6) Enable automated spam training: yes
7) Spam training user:

```

spam.jjt0i43dxw@mail.rmutl.com

8) Non-spam(Ham) training user:

ham.zfdo\_wqgzg@mail.rmutl.com

9) SMTP host: mail.rmutl.com

10) Web server HTTP port: 80

11) Web server HTTPS port: 443

12) Web server mode: http

13) IMAP server port: 7143

14) IMAP server SSL port: 7993

15) POP server port: 7110

16) POP server SSL port: 7995

17) Use spell check server: yes

18) Spell server URL:

http://mail.rmutl.com:7780/aspell.php

19) Enable version update checks: TRUE

20) Enable version update notifications: TRUE

21) Version update notification email:

admin@mail.rmutl.com

22) Version update source email:

admin@mail.rmutl.com

Select, or 'r' for previous menu [r] [] r []

[] []

Main menu

1) Common Configuration:

2) zimbra-ldap: Enabled

3) zimbra-store: Enabled

4) zimbra-mta: Enabled

5) zimbra-snmp: Enabled

6) zimbra-logger: Enabled

7) zimbra-spell: Enabled

8) zimbra-proxy: Enabled

9) Default Class of Service Configuration:

r) Start servers after configuration yes

s) Save config to file

x) Expand menu

q) Quit

```
*** CONFIGURATION COMPLETE – press ‘a’ to apply
Select from menu, or press ‘a’ to apply config (? – help)
a  a
Save configuration data to a file? [Yes]
Save config in file: [/opt/zimbra/config.10246]
Saving config in /opt/zimbra/config.10246...done.
The system will be modified – continue? [No] yes
Operations logged to /tmp/zmsetup.02142011-111650.log
Setting local config values...done.
Setting up CA...done.
Deploying CA to /opt/zimbra/conf/ca ...done.
Creating SSL certificate...done.
Installing mailboxd SSL certificates...done.
Initializing ldap...done.
Setting replication password...done.
Setting Postfix password...done.
Setting amavis password...done.
Setting nginx password...done.
Creating server entry for mail.rmutl.com...done.
Saving CA in ldap ...done.
Saving SSL Certificate in ldap ...done.
Setting spell check URL...done.
Setting service ports on mail.rmutl.com...done.
Adding mail.rmutl.com to zimbraMailHostPool in default
COS...done.
Installing webclient skins...
twilight...done.
bones...done.
lavender...done.
tree...done.
steel...done.
pebble...done.
oasis...done.
lake...done.
carbon...done.
```

smoke...done.  
beach...done.  
lemongrass...done.  
hotrod...done.  
sand...done.  
waves...done.  
sky...done.  
bare...done.  
Finished installing webclient skins.  
Setting zimbraFeatureTasksEnabled=TRUE...done.  
Setting zimbraFeatureBriefcasesEnabled=TRUE...done.  
Setting MTA auth host...done.  
Setting TimeZone Preference...done.  
Initializing mta config...done.  
Setting services on mail.rmutl.com...done.  
Creating domain mail.rmutl.com...done.  
Setting default domain name...done.  
Creating domain mail.rmutl.com...already exists.  
Creating admin account admin@mail.rmutl.com...done.  
Creating root alias...done.  
Creating postmaster alias...done.  
Creating user spam.jjt0i43dxw@mail.rmutl.com...done.  
Creating user ham.zfdo\_wqgzg@mail.rmutl.com...done.  
Creating user virus-quarantine.dhd8naot@mail.rmutl.com...done.  
Setting spam training and Anti-virus quarantine accounts...done.  
Initializing store sql database...done.  
Setting zimbraSmtphostname for mail.rmutl.com...done.  
Configuring SNMP...done.  
Checking for default IM conference room...not present.  
Initializing default IM conference room...done.  
Setting up syslog.conf...done.

You have the option of notifying Zimbra of your installation. This helps us to track the uptake of the Zimbra Collaboration Suite.

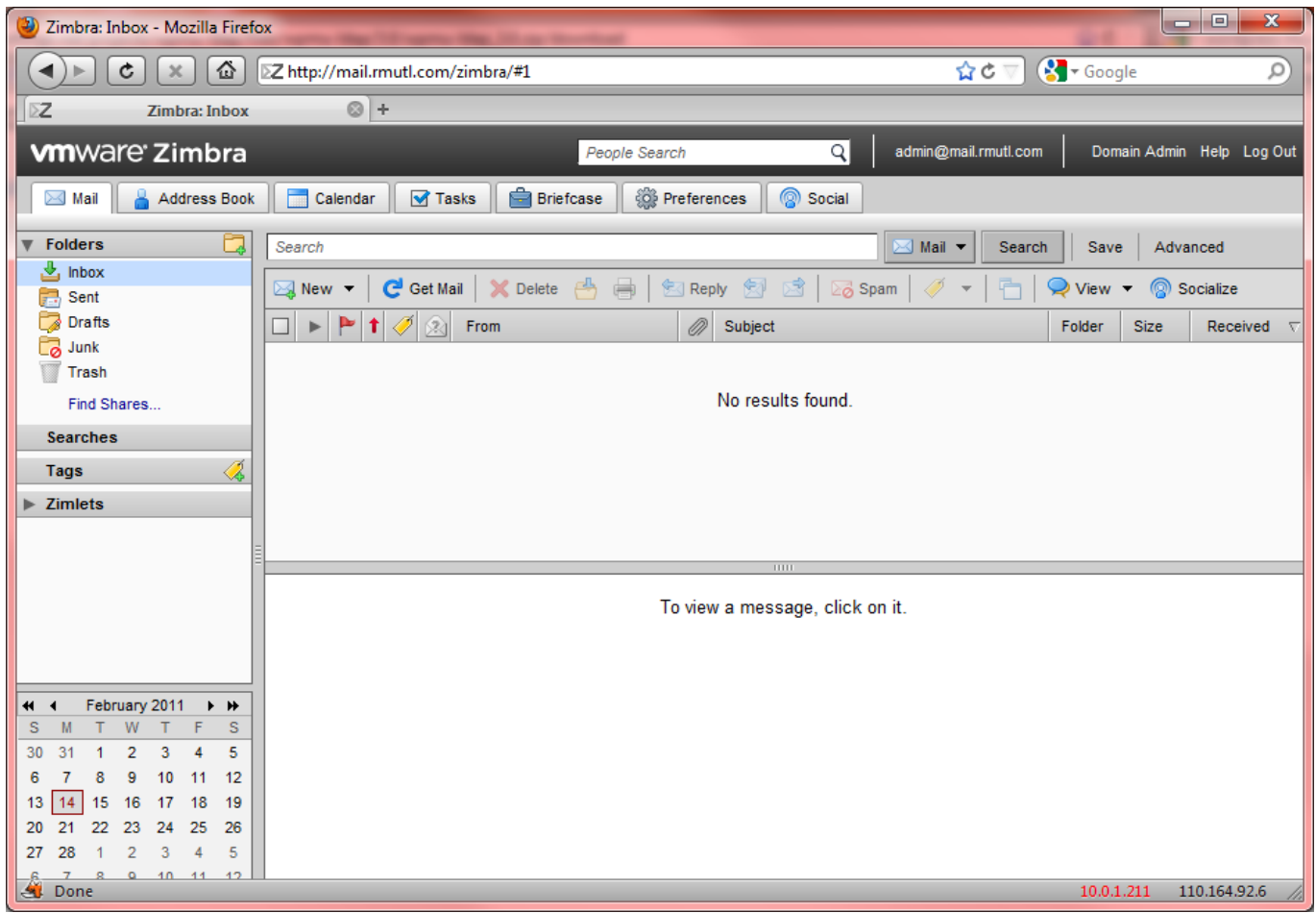
The only information that will be transmitted is:



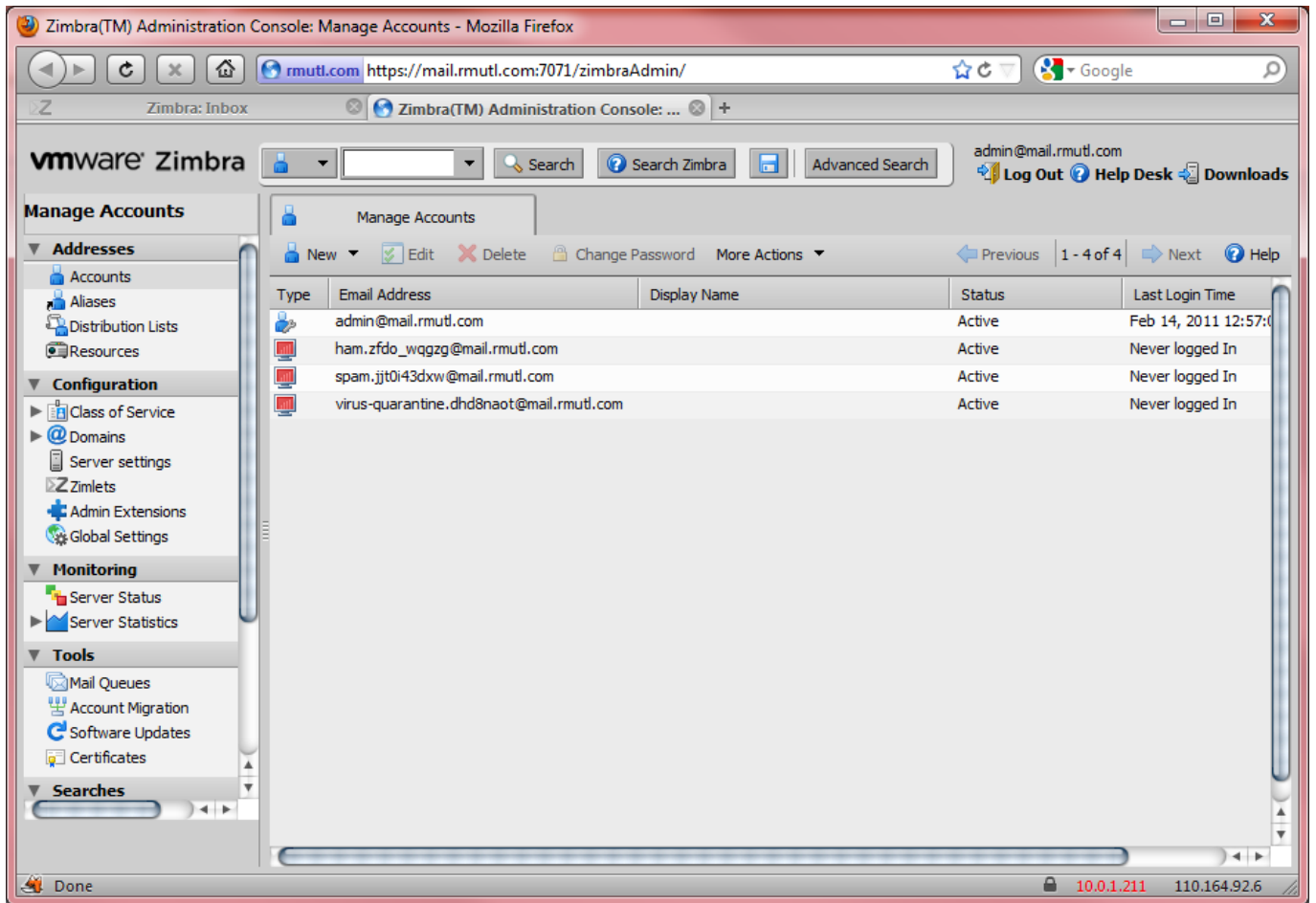
(admin login)

https://mail.rmutl.com:7071

7. [ ]



8. [ ]



9. `iptables` `iptables` `iptables`

10. `e-mail` `mx` `mx` `mx`