





Specify the destination you want to connect to Serial line `/dev/ttyUSB0` Speed `9600` Connection type:  Raw  Telnet  Rlogin  SSH  Serial

Load, save or delete a stored session

Saved Sessions

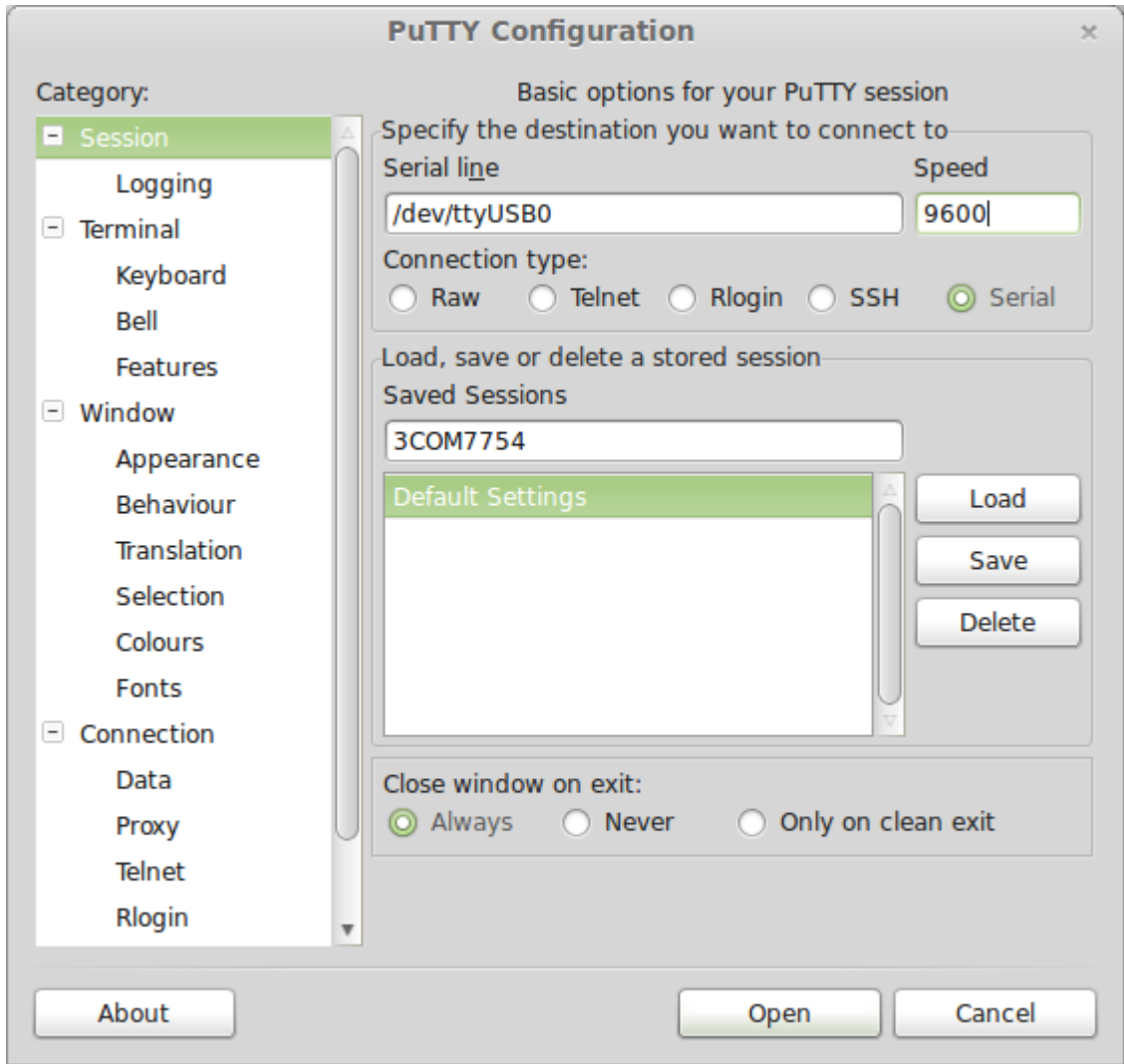
`3COM7754`

`Default Settings`

Load Save Delete

Close window on exit:  Always  Never  Only on clean exit

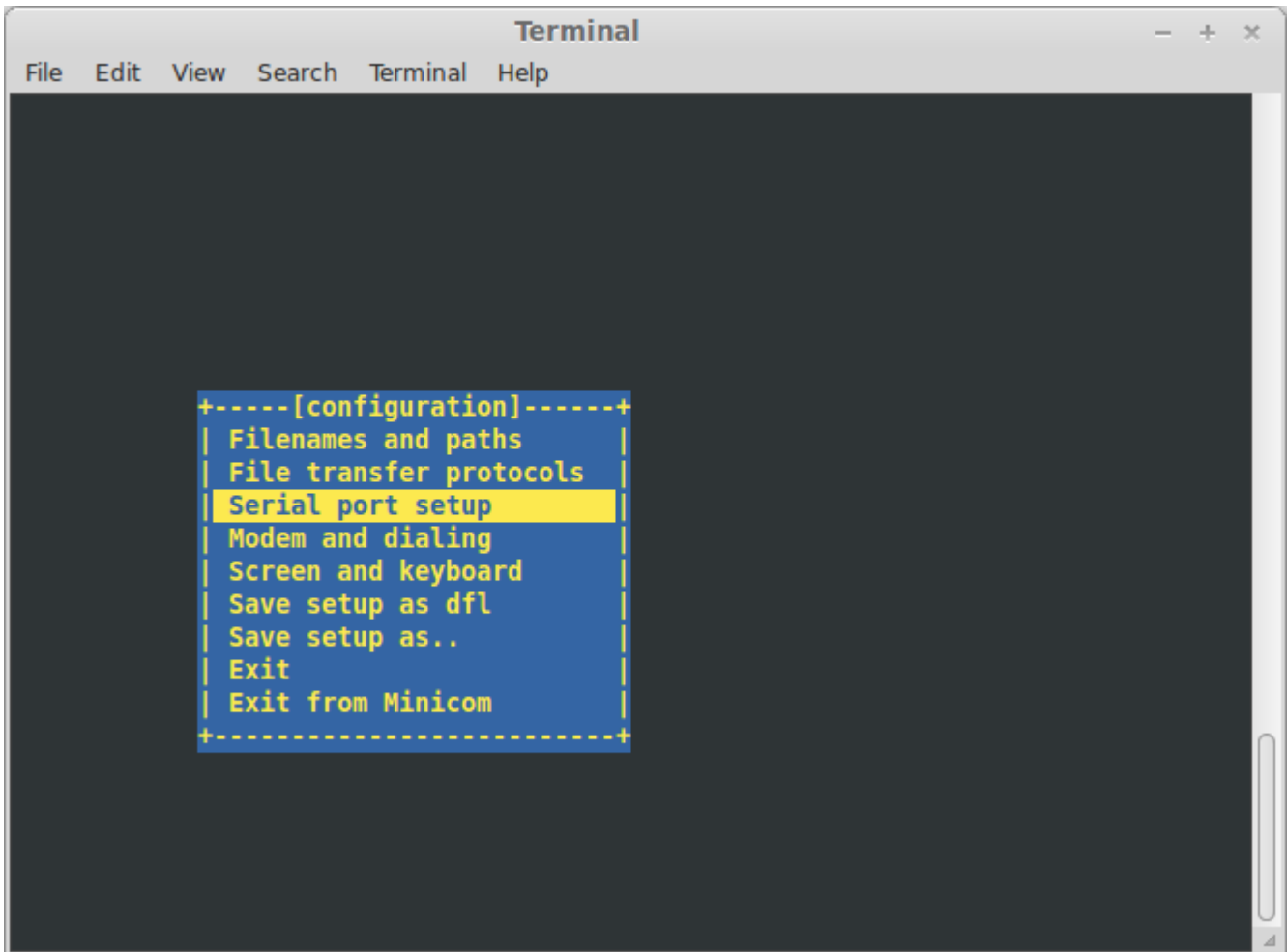
About Open Cancel



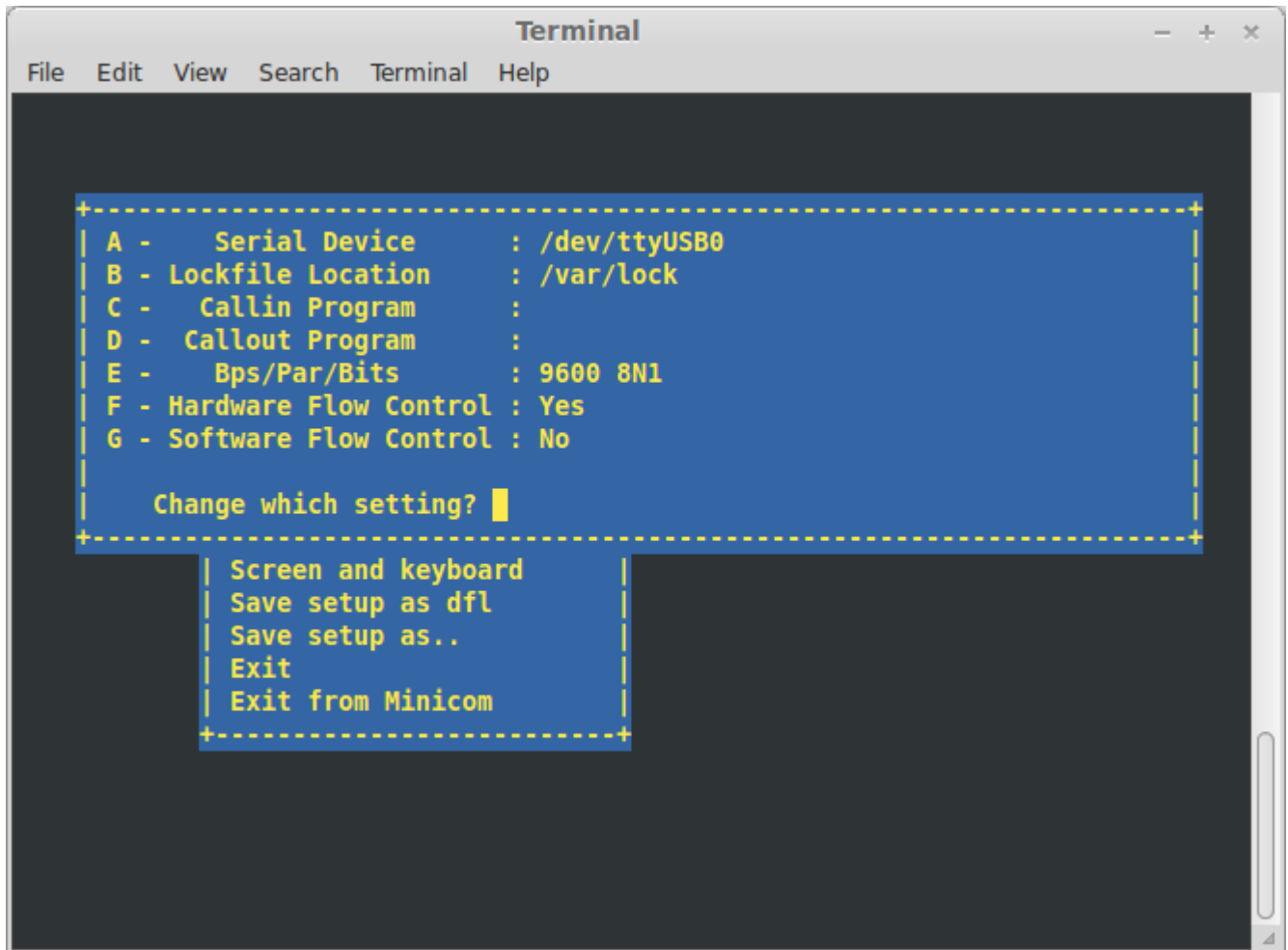
- Click the **Open** button. The PuTTY terminal window opens. (Press **Enter** to start the connection.) If you see an **Error** message, check the serial line and speed settings in PuTTY.



- minicom 是 Linux Mint 中用于串口通信的终端程序。在 Linux Mint 中，可以通过 Software Manager 安装 minicom。安装完成后，可以在 Terminal 中运行以下命令来启动 minicom：
  - `minicom -s` 用于启动 minicom 并进入设置菜单。
  - `sudo minicom -s -c on` 用于启动 minicom 并直接进入串口配置。



- minicom 실행 후 configuration 메뉴에서 Serial port setup 선택 후 Enter
- A Device 선택 후 /dev/ttyUSB0 선택 후 Enter E Speed ( B ) 선택 후 9600 선택 후 Enter



- `Save setup as dfl` Enter
- `Exit`

```
Terminal
File Edit View Search Terminal Help

Welcome to minicom 2.6.2

OPTIONS: I18n
Compiled on Feb  8 2013, 07:03:03.
Port /dev/ttyUSB0, 13:51:12

Press CTRL-A Z for help on special keys

<SW7750>
<SW7750>sys
System View: return to User View with Ctrl+Z.
[SW7750]di
[SW7750]display cu
[SW7750]display current-configuration
#
 sysname SW7750
#
 domain default enable system
#
 temperature-limit 0 10 70
 temperature-limit 1 10 70
#
 poe power max-value 2400
#
```

- Terminal

\*\* <http://www.cyberciti.biz/tips/connect-soekris-single-board-computer-using-minicom.html>