

# Grave Mint amd64



Grave Mint amd64 (Alt+Space)

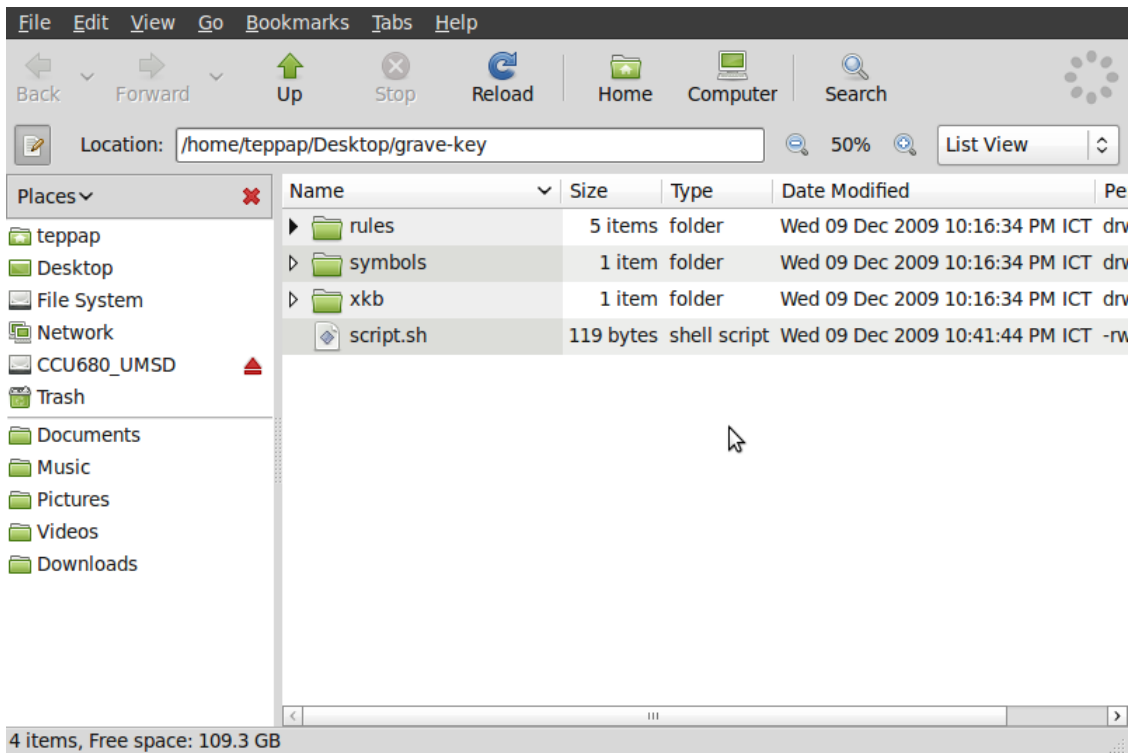
Grave Linux (mint7 ubuntu 8.10) Grave

Open Source Grave xkb-data-grave.deb i386 32 bit amd64

File Help Package: xkb-data-grave Install Package Status: Error: Wrong architecture 'i386' Description Details Included Files Grave Switches layout with X11 keyboard system(XKB). This package Develop for Ubuntu 8.10 (Intrepid Ibex).

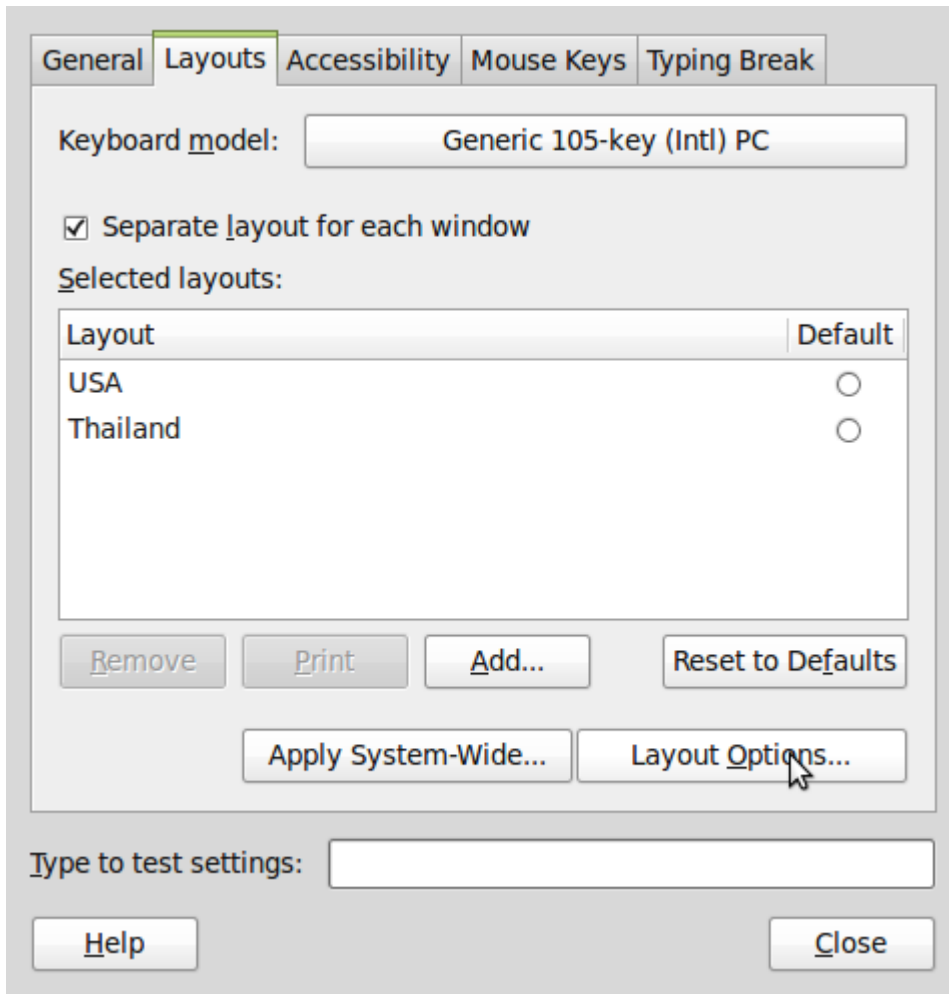
Download the archive file from the link below (download id="29") and extract it to your desktop.

After extraction, you will have a folder named `grave-key` on your desktop. Inside this folder, there is a file named `script.sh`. Open a Terminal window and run the following command to execute the script:

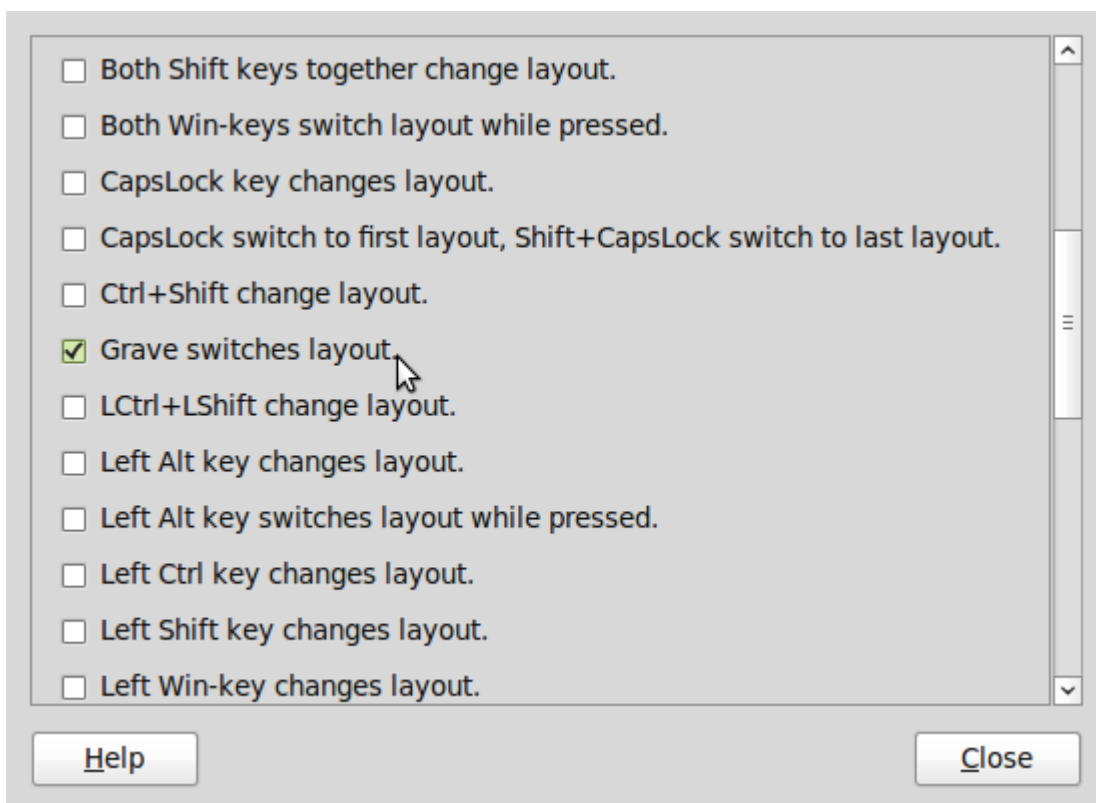


1. Open a Terminal window and run the following command to become root user:  
`su -`
2. Change the current directory to the location of the `grave-key` folder (located on Desktop) and run the following command to execute the script:  
`cd /home/teppap/Desktop/grave-key/`  
`./script.sh`
3. Change the permissions of the `script.sh` file to make it executable:  
`chmod 755 script.sh`
4. Run the script file to generate the keymap.





6. Grave switches layout



7.0 (Linux Mint 7 amd64) (Linux Mint 8) (Linux Mint 8 amd64)