

การตรวจสอบ integrity ของไฟล์ด้วย hash



การตรวจสอบ integrity ของไฟล์ด้วย hash คือการตรวจสอบว่าไฟล์ที่เราดาวน์โหลดมาตรงกับไฟล์ต้นฉบับหรือไม่ โดยการใช้ค่า hash มาเปรียบเทียบกับค่า hash ที่ผู้พัฒนาไฟล์ได้แนบมา

ค่า hash เป็นค่าที่แสดงถึงลักษณะเฉพาะของไฟล์ (เช่น ขนาดของไฟล์, เนื้อหาของไฟล์) ซึ่งค่า hash นี้จะไม่เปลี่ยนแปลงไม่ว่าเราจะดาวน์โหลดไฟล์มากี่ครั้งก็ตาม

การตรวจสอบ integrity ของไฟล์ด้วย hash สามารถทำได้โดยการใช้คำสั่ง md5sum หรือ sha1sum ใน terminal

Index of /osarchive/centos/4.7/isos/i386/

Name	Last Modified	Size	Type
Parent Directory/		-	Directory
CentOS-4.7-i386-bin1of4.iso	2008-Aug-06 02:46:23	635.3M	application/octet-stream
CentOS-4.7-i386-bin1to4.torrent	2008-Sep-12 20:05:12	182.2K	application/x-bittorrent
CentOS-4.7-i386-bin2of4.iso	2008-Aug-06 02:47:41	636.4M	application/octet-stream
CentOS-4.7-i386-bin3of4.iso	2008-Aug-06 02:49:05	638.1M	application/octet-stream
CentOS-4.7-i386-bin4of4.iso	2008-Aug-06 02:50:01	416.4M	application/octet-stream
CentOS-4.7-i386-binDVD.torrent	2008-Sep-12 20:11:14	181.8K	application/x-bittorrent
CentOS-4.7.ServerCD-i386.iso	2008-Oct-16 03:22:20	608.0M	application/octet-stream
CentOS-4.7.ServerCD-i386.torrent	2008-Oct-17 06:12:58	47.7K	application/x-bittorrent
md5sum	2008-Oct-17 07:04:43	0.3K	application/octet-stream
md5sum.asc	2008-Oct-17 07:06:32	0.6K	application/pgp-signature
sha1sum.txt	2008-Oct-17 07:05:35	0.4K	text/plain
sha1sum.txt.asc	2008-Oct-17 07:06:33	0.6K	application/pgp-signature

lighttpd on Burapha Linux Server

การตรวจสอบ integrity ของไฟล์ด้วย hash สามารถทำได้โดยการใช้คำสั่ง md5sum หรือ sha1sum ใน terminal (เช่น md5sum sha1.sum.txt)

6272d724f0abb95d2a5652724fe6b3740706d543
CentOS-4.7.ServerCD-i386.iso

Linux md5sum , sha1sum hash
www.keir.net [download id="23"]

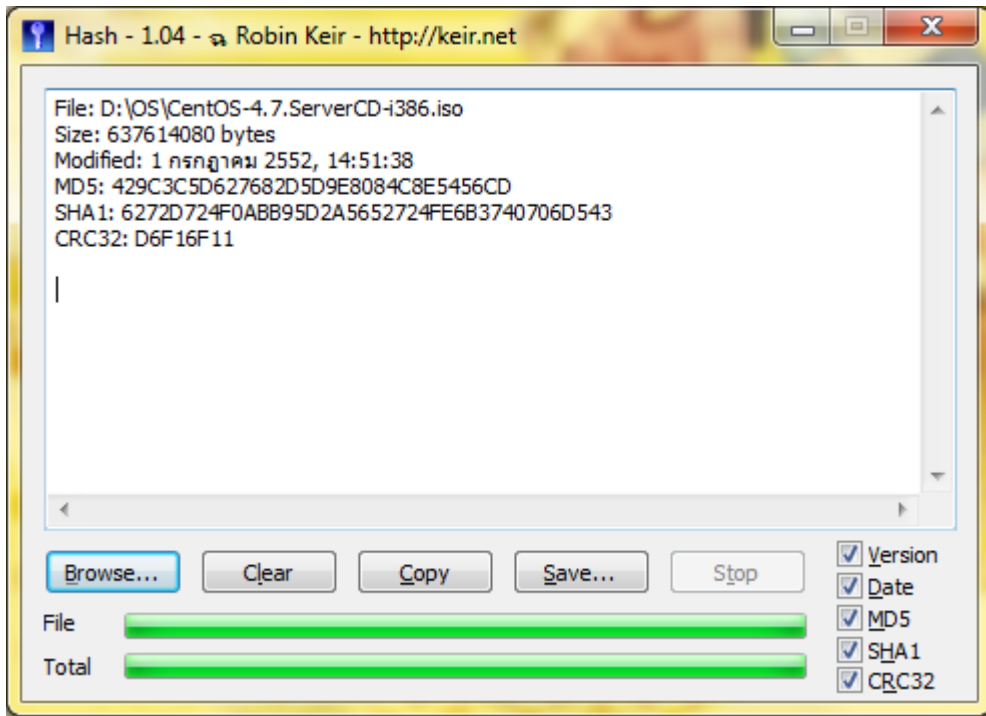
Hash www.keir.net

- Version
- Date
- MD5
- SHA1
- CRC32

hash.exe

hash.exe

browse



โปรแกรมนี้ใช้สำหรับ (โปรแกรมที่คำนวณค่าแฮชของไฟล์)

 โปรแกรมนี้ใช้สำหรับคำนวณค่า hash ของไฟล์

 โปรแกรมนี้ใช้สำหรับคำนวณค่า hash ของไฟล์

 โปรแกรมนี้ใช้สำหรับคำนวณค่า hash ของไฟล์

 โปรแกรมนี้ใช้สำหรับคำนวณค่า hash ของไฟล์

 โปรแกรมนี้ใช้สำหรับคำนวณค่า hash ของไฟล์

โปรแกรมนี้ใช้สำหรับคำนวณค่า hash ของไฟล์

SHA1: 6272D724F0ABB95D2A5652724FE6B3740706D543

โปรแกรม hash ของไฟล์

6272d724f0abb95d2a5652724fe6b3740706d543
CentOS-4.7.ServerCD-i386.iso

******โปรแกรมนี้ใช้สำหรับคำนวณค่า hash ของไฟล์ MD5 ,
 SHA1 , CRC32

โปรแกรมนี้ใช้สำหรับคำนวณค่าแฮชของไฟล์

 โปรแกรมนี้ใช้สำหรับคำนวณค่าแฮชของไฟล์

 โปรแกรมนี้ใช้สำหรับคำนวณค่าแฮชของไฟล์

 โปรแกรมนี้ใช้สำหรับคำนวณค่าแฮชของไฟล์

CentOS 5.3 yum upgrade TypeError: unsubscriptable object



```

#####
#####
#####
#####
##### CentOS 5.3 64 bit #####
yum upgrade #####

```

Error #####

```

[root@centos ~]# yum -y upgrade
Loaded plugins: fastestmirror
Loading mirror speeds from cached hostfile
* base: centosn3.centos.org
* updates: centosk3.centos.org
* addons: centosk3.centos.org
* extras: centosh3.centos.org
Setting up Upgrade Process
Resolving Dependencies
-> Running transaction check
-> Package perl-DBD-Pg.x86_64 0:1.49-2.el5_3.1 set to be
updated
Traceback (most recent call last):
File "/usr/bin/yum", line 29, in ?
yummain.user_main(sys.argv[1:], exit_code=True)
File "/usr/share/yum-cli/yummain.py", line 229, in user_main
errcode = main(args)
File "/usr/share/yum-cli/yummain.py", line 145, in main
(result, resultmsgs) = base.buildTransaction()
File "/usr/lib/python2.4/site-packages/yum/__init__.py", line
647, in buildTransaction

```

```
(rescode, restring) = self.resolveDeps()
File "/usr/lib/python2.4/site-packages/yum/depolve.py", line
704, in resolveDeps
for po, dep in self._checkFileRequires():
File "/usr/lib/python2.4/site-packages/yum/depolve.py", line
939, in _checkFileRequires
if not self.tsInfo.getOldProvides(filename) and not
self.tsInfo.getNewProvides(filename):
File "/usr/lib/python2.4/site-
packages/yum/transactioninfo.py", line 414, in getNewProvides
for pkg, hits in self.pkgSack.getProvides(name, flag,
version).iteritems():
TypeError: unsubscriptable object
[root@centos ~]#
```

```

CentOS 5.2 yum
CentOS 5.3 yum
```

```
yum
```

```
[root@centos ~]# yum clean metadata
Loaded plugins: fastestmirror
29 metadata files removed
12 sqlite files removed
0 metadata files removed
```

```
[root@centos ~]# yum clean all
```

```
[root@centos ~]# yum -y upgrade
```

การแปลภาษาด้วย Google Translate

การแปลภาษาด้วย google translate



การแปลภาษาด้วย Google Translate เป็นบริการที่ช่วยให้คุณสามารถแปลข้อความหรือประโยคจากภาษาหนึ่งไปเป็นอีกภาษาหนึ่งได้อย่างรวดเร็วและง่ายดาย

บริการนี้รองรับการแปลภาษาในกว่า 100 ภาษา ซึ่งรวมถึงภาษาไทย อังกฤษ ฝรั่งเศส สเปน อิตาลี เยอรมัน ญี่ปุ่น เกาหลี จีน รัสเซีย และอื่นๆ อีกมากมาย

คุณสามารถเข้าถึงบริการนี้ได้โดยไปที่ [Search Engine \(Google\)](https://www.google.com/search?q=google+translate) และพิมพ์ "Google Translate" ในช่องค้นหา

หรือคุณสามารถคลิกที่ลิงก์ต่อไปนี้

<https://www.google.com/translate>

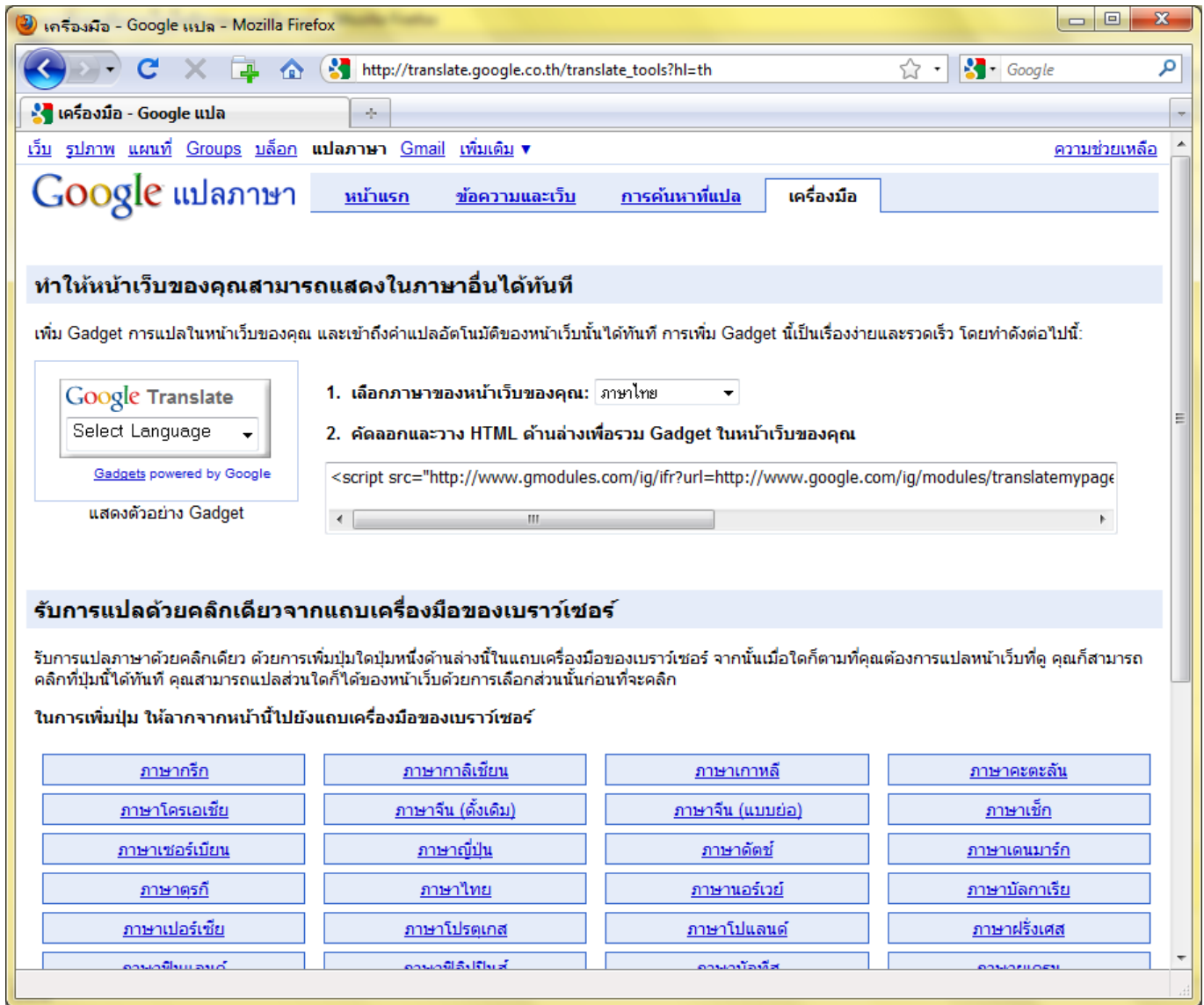
หรือคุณสามารถพิมพ์ URL ดังต่อไปนี้

การแปลภาษาด้วย Google Translate เป็นบริการที่ช่วยให้คุณสามารถแปลข้อความหรือประโยคจากภาษาหนึ่งไปเป็นอีกภาษาหนึ่งได้อย่างรวดเร็วและง่ายดาย

คุณสามารถเข้าถึงบริการนี้ได้โดยไปที่ [Search Engine \(Google\)](https://www.google.com/search?q=google+translate) และพิมพ์ "Google Translate" ในช่องค้นหา

หรือคุณสามารถคลิกที่ลิงก์ต่อไปนี้

วิธีติดตั้ง Google Translate บนเว็บไซต์ของคุณ “[วิธีติดตั้ง Google Translate](#)”
วิธีติดตั้ง Google Translate บนเว็บไซต์ของคุณ
วิธีติดตั้ง Google Translate บนเว็บไซต์ของคุณ
วิธีติดตั้ง Google Translate บนเว็บไซต์ของคุณ
วิธีติดตั้ง Google Translate บนเว็บไซต์ของคุณ



วิธีติดตั้ง WordPress Plugin [global-translator](#)
วิธีติดตั้ง [global-translator](#)
วิธีติดตั้ง [global-translator](#)
วิธีติดตั้ง [global-translator](#)
วิธีติดตั้ง [global-translator](#)

Electrical interference at node 1 in Chiang Mai.

prasert teppap July 5th, 2009 Prasert Teppap. No comments



Saturday, 4 July 2552 at 17:45 pm Power (should) consent to the node 1, Chiang Mai network problem. And as a holiday. Can not continue to enable / check the real reason.

Departments / building / building That are affected by the events of that is a.

Building Director, cafeteria, administration building. (All), foundry, industry, technical, engineering industry, building block

From inspection found that Cause cause A backup power fails. When left open occasionally to heat up. And it will close itself automatically. Now make changes to the electrical equipment with Surge Protect.

Random Posts.

- Link Down CAT.
- Setup apache to port 80 and IIS work together.
- File a skills training program for IT administrator information.
- Announced the cancellation of services Bittorrent.
- Use the network to seven outstanding objections.

Translator.



By N2H

NOC Subscribe.

Your email

ノード1で電氣的干渉チェンマイ。

7月、2009 Prasert Teppap 5 コメントはありません



土曜日午後17:45パワー(必要があるノード1)の同意は、ネットワークの問題チェンマイ 2552年7月4日まで。また、休日である。有効にするには継続することはできません/本当の理由をご確認ください。

部門/建築/建設 そのイベントの影響を受けているのaされています。

建築監督、カフェテリア、管理棟。(すべて)、鋳物、産業、技術、エンジニアリング業界、ブロック構築

検査から見て を引き起こす原因 バックアップ電源は失敗します。時々オープンするときに熱を熱した。と自動的に終了します。サージ保護するとの電気機器に変更を加える。

ランダムな記事。

- UniNetトレーニングワークショップ1ほどのようにドメイン名に " システムのセキュリティを追加する
- パッケージtrixbox、ないiceの問題を解決するために。
- インターネットサービスの間に時間を通告00.00 - 00.20午後
- ネットワークの問題事項乾燥しています。
- 停電のチェンライ事項。

翻訳者。



N2H。

Placeholder text consisting of multiple lines of empty rectangular boxes.

Windows live messenger (Offline Install)



Windows 7
Build 7260 32 bit
Applications

Applications

Windows live messenger 2009
Error
Offline
Install (messenger) 2.4 MB
install
program group
start menu
login

program and feture (Add/Remove Program)
your uninstall

windows live messenger 2009 offline
install
messenger

Choose the programs you want to install

Click each program name for details.

- Mail
- Photo Gallery
- Toolbar
- Writer
- Family Safety
- Microsoft Office Outlook...
- Microsoft Office Live Ad...
- Movie Maker Beta

You already have these programs:

- Messenger
- Silverlight

Messenger

Send instant messages to contacts or groups, play games, share pictures as you chat, and see what's new with people you know.

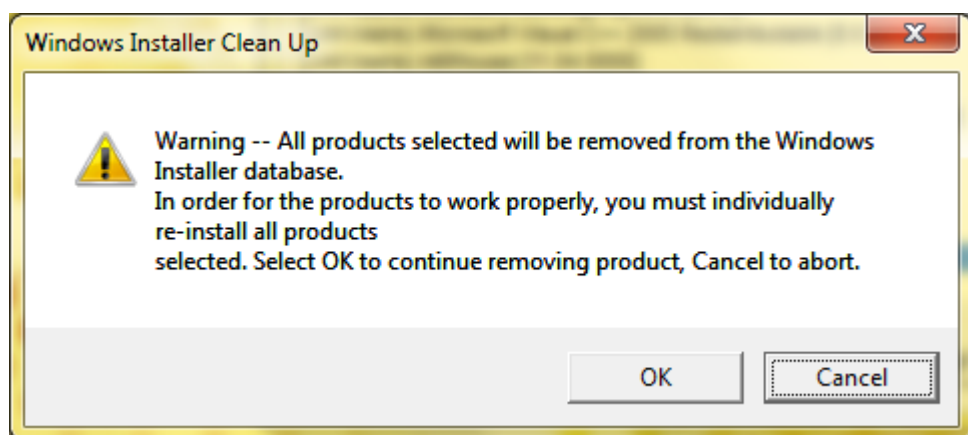
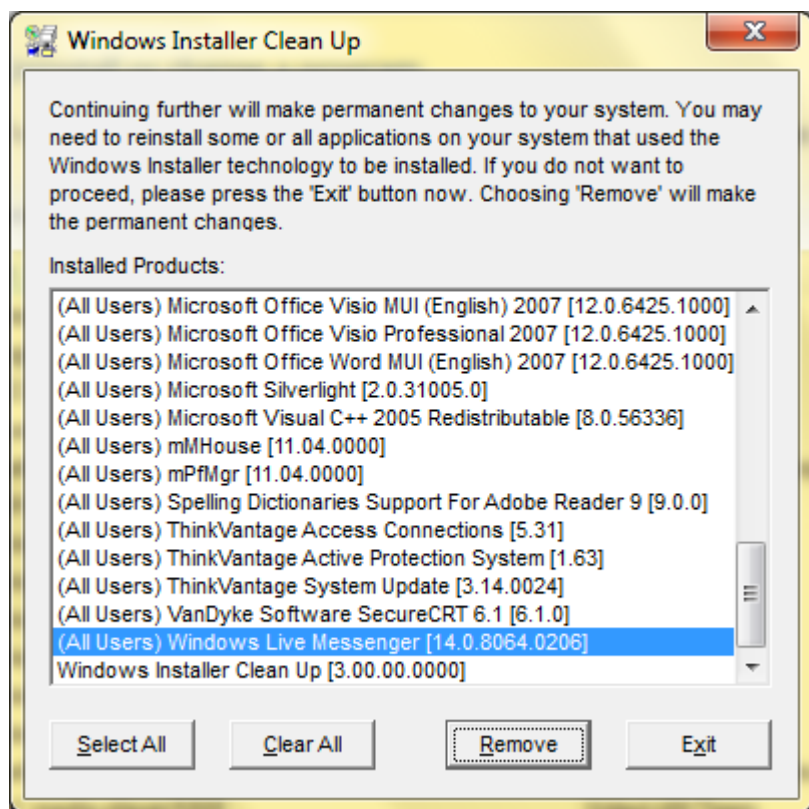
Installed with this program:

- Microsoft Application Error Reporting
- Microsoft Visual Studio Runtime
- Windows Live Communications Platform
- Windows Live Call

Space needed: 128 MB
Space available: 52.6 GB

Windows Installer CleanUp Utility (351 KB)

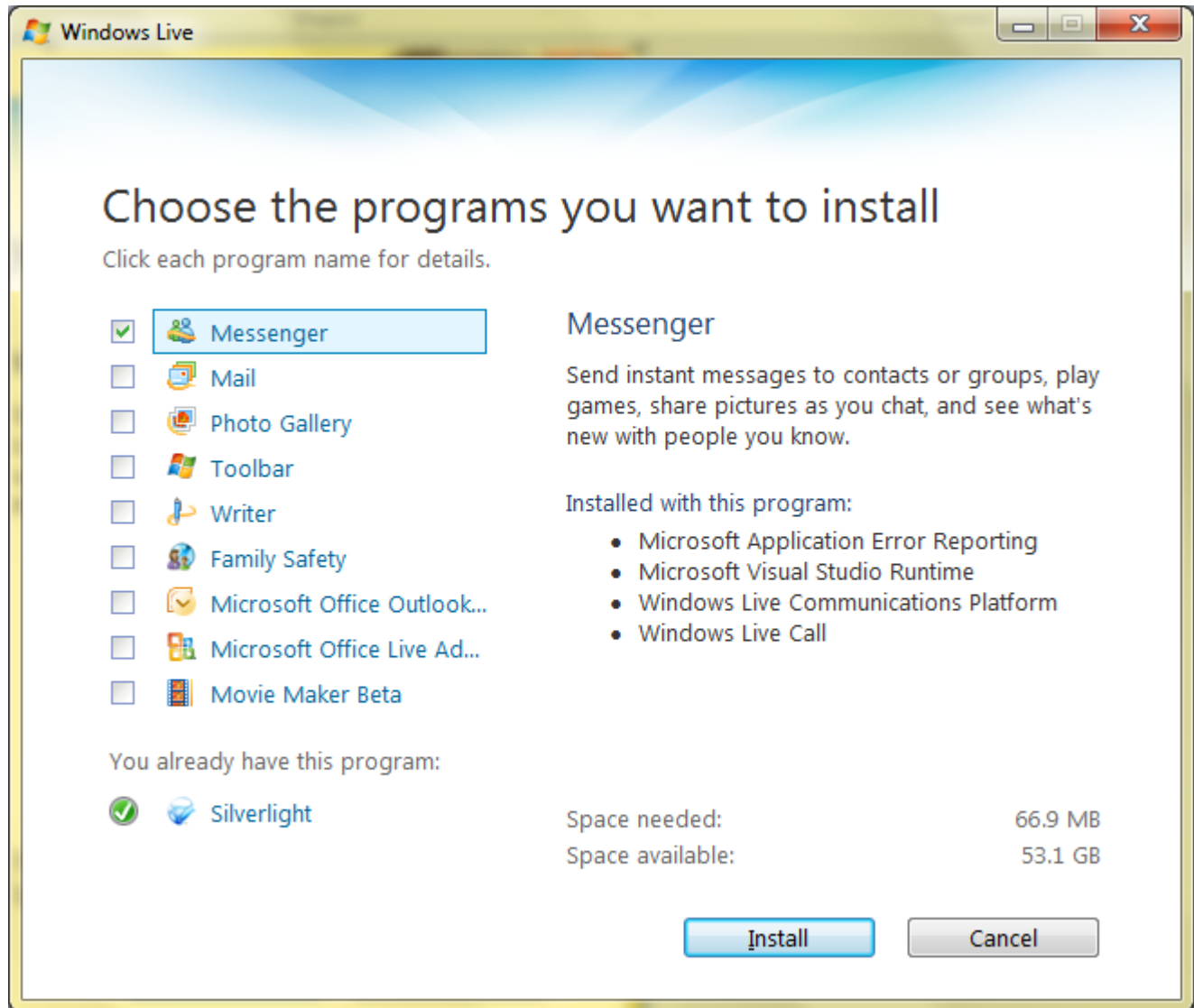
Windows live messenger (Remove)



Remove windows live messenger

Windows Live Messenger installation window

Windows Live Messenger installation window



packages

trixbox ce 安裝說明



本說明書將為您提供有關如何安裝 Trixbox CE 的詳細信息。Tribox CE 是一個基於 Asterisk 的 VoIP 平台，旨在為中小企業提供經濟實惠的通信解決方案。本說明書將引導您完成從安裝到配置的整個過程。如果您遇到任何問題，請參閱 [Trixbox ce](#) 的 Build 頁面，以獲取最新的安裝指南。本說明書適用於 CentOS 5.2 系統。

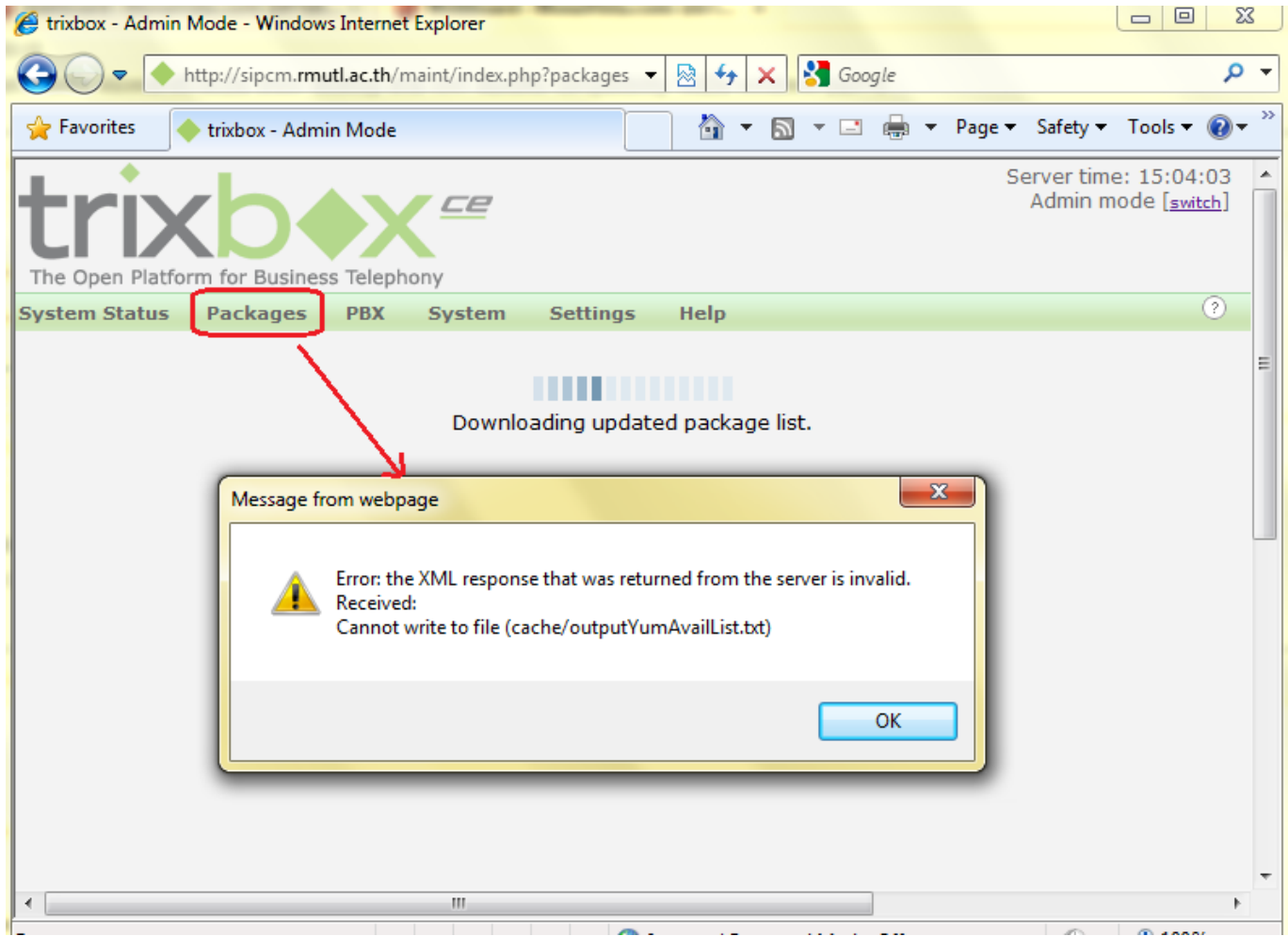
簡介

本說明書將為您提供有關如何安裝 Trixbox CE 的詳細信息。Tribox CE 是一個基於 Asterisk 的 VoIP 平台，旨在為中小企業提供經濟實惠的通信解決方案。本說明書將引導您完成從安裝到配置的整個過程。如果您遇到任何問題，請參閱 [Trixbox ce](#) 的 Build 頁面，以獲取最新的安裝指南。本說明書適用於 CentOS 5.2 系統。

Error: the XML response that was returned from the server is invalid.

Received: Cannot write to file (cache/outputYumAvailList.txt)

本說明書將為您提供有關如何安裝 Trixbox CE 的詳細信息。Tribox CE 是一個基於 Asterisk 的 VoIP 平台，旨在為中小企業提供經濟實惠的通信解決方案。本說明書將引導您完成從安裝到配置的整個過程。如果您遇到任何問題，請參閱 [Trixbox ce](#) 的 Build 頁面，以獲取最新的安裝指南。本說明書適用於 CentOS 5.2 系統。



yum package list (local or remote) (local or remote cd-rom) package list

yum update

yum install package

```



```

yum install dnsmasq

resolv.conf

```
[trixbox1.localdomain etc]# vi /etc/resolv.conf
nameserver 192.168.10.100
nameserver 192.168.10.101
```

() packages memory

```
vi /etc/php.ini
```

```
;;;;;;;;;;
; Resource Limits ;
;;;;;;;;;;
```

```
max_execution_time = 30 ; Maximum execution time of each
script, in seconds
max_input_time = 60 ; Maximum amount of time each script
may spend parsing request data
memory_limit = 512M ; Maximum amount of memory a script
may consume (8MB)
```

restart service apache

```
[trixbox1.localdomain etc]# service httpd restart
Stopping httpd: [
OK ]
Starting httpd: [
OK ]
```

packages

ntp Alcatel Switch



Alcatel 3Com

NTP Network Time Protocol

Alcatel Switch 6850, 9700

Alcatel-9700-> show system

System:

Description: 6.3.1.1042.R01 Service Release, November 20, 2008.,

Object ID: 1.3.6.1.4.1.6486.800.1.1.2.1.8.1.1,
Up Time: 162 days 0 hours 56 minutes and 6 seconds,
Contact: Alcatel-Lucent,
<http://alcatel-lucent.com/wps/portal/enterprise>,
Name: Alcatel-9700,
Location: network,
Services: 72,
Date & Time: THU JUN 18 2009 14:27:13 (LOCAL)

```
ntp server 192.168.10.200
```

```
Alcatel-9700->ntp server 192.168.10.200
```

```
Alcatel-9700->ntp client enable
```

```
show ntp server status
```

```
Alcatel-9700-> show ntp server status
```

```
IP address          = 192.168.10.200,  
Host mode           = client,  
Peer mode           = server,  
Prefer               = no,  
Version             = 4,  
Key                 = 0,  
Stratum             = 2,  
Minpoll             = 6 (64 seconds),  
Maxpoll             = 10 (1024 seconds),  
Delay               = 0.016 seconds,  
Offset              = 0.058 seconds,  
Dispersion          = 1.952 seconds  
Root distance       = 0.027,  
Precision           = -20,  
Reference IP        = 203.185.69.59,  
Status              = configured : reachable : rejected,  
Uptime count        = 13894301 seconds,
```

```

Reachability          = 7,
Unreachable count    = 0,
Stats reset count    = 13894136 seconds,
Packets sent         = 3,
Packets received     = 3,
Duplicate packets    = 0,
Bogus origin         = 0,
Bad authentication   = 0,
Bad dispersion       = 0,
Last Event           = peer changed to reachable,

```

```

##### ntp server #####
#####

```

```

Alcatel-9700-> show ntp client server-list

```

```

IP Address          Ver   Key   St   Delay
Offset             Disp
-----+---+---+---+---+---+---+---+---+
*192.168.10.200      4     0    2    0.016
0.133              0.016

```

```

#####
#####
#####
#####

```

```

Alcatel-9700-> show ntp client

```

```

Current time:          Thu, Jun 18 2009  8:38:44.619
(UTC), -> ##### UTC ##### +7 #####
#####
Last NTP update:      Thu, Jun 18 2009  8:38:24.385
(UTC),
Server reference:     192.168.10.200,
Client mode:          enabled,
Broadcast client mode: disabled,
Broadcast delay (microseconds): 4000,
Server qualification: synchronized

```

Alcatel-9700->show system

System:
Description: 6.3.1.1042.R01 Service Release, November 20, 2008.,
Object ID: 1.3.6.1.4.1.6486.800.1.1.2.1.8.1.1,
Up Time: 162 days 1 hours 4 minutes and 58 seconds,
Contact: Alcatel-Lucent,
http://alcatel-lucent.com/wps/portal/enterprise,
Name: Node3Library,
Location: Library,
Services: 72,
Date & Time: THU JUN 18 2009 14:36:05 (LOCAL)

Node 3 Library->system time

16:01:00 (LOCAL)

Node 3 Library->system date
THU JUN 18 2009

Alcatel-9700->write memory

Alcatel-9700->copy working certified

Alcatel-9700->copy working certified flash-synchro

Alcatel-9700->copy working certified flash-synchro

admin

3com switch



switching 3com 4500 password-control length 6
local-user admin

login system-view
password-control length 6
user user
local-user xxxx

```
<4500>sys
System View: return to User View with Ctrl+Z.
[4500]password-control length 6
[4500]local-user admin
[4500-luser-admin]
```

```
switching 3com 4500
s3n03_03_02s56.app
```

```
<4500>sys
System View: return to User View with Ctrl+Z.
[4500]password-control length 6
[4500]local-user admin
[4500-luser-admin]
```

passwords are stored in the /etc/shadow file. The password is stored in a hashed form. The password is hashed using a salt and a cryptographic hash function. The salt is a random string of characters that is added to the password before it is hashed. The hash function is a one-way function that takes the password and salt as input and produces a fixed-length output. The output is then stored in the /etc/shadow file.

`cipher =` Display password with cipher text
`simple =` Display password with plain text

`simple =` Display password with plain text
**passwords are stored in the /etc/shadow file

```
[4500-luser-admin]password ?  
cipher  Display password with cipher text  
simple   Display password with plain text
```

admin abcdef

```
[4500-luser-admin]password cipher abcdef  
The system failed to assign password. It has been used  
previously.
```

(password control)

policy

```
[4500]password-control ?  
aging          Specify password aging time ->  
alert-before-expire Specify the alert time before  
password expired ->  
authentication-timeout Specify the authentication timeout ->  
composition    Specify composition of password ->  
history        Specify maximum history record ->
```


local-user admin password cipher abcdef
admin

```
[4500]local-user admin
[4500-luser-admin]password cipher abcdef
Updating user password, please wait.....
```

*** cipher R9E#&=!H6Q_QxT77=^Q`MAF4<1!!

```
[4500-luser-admin]quit
[4500]save
[4500]quit
<4500>quit
```

stp alcatel 3com root

stp alcatel 3com root



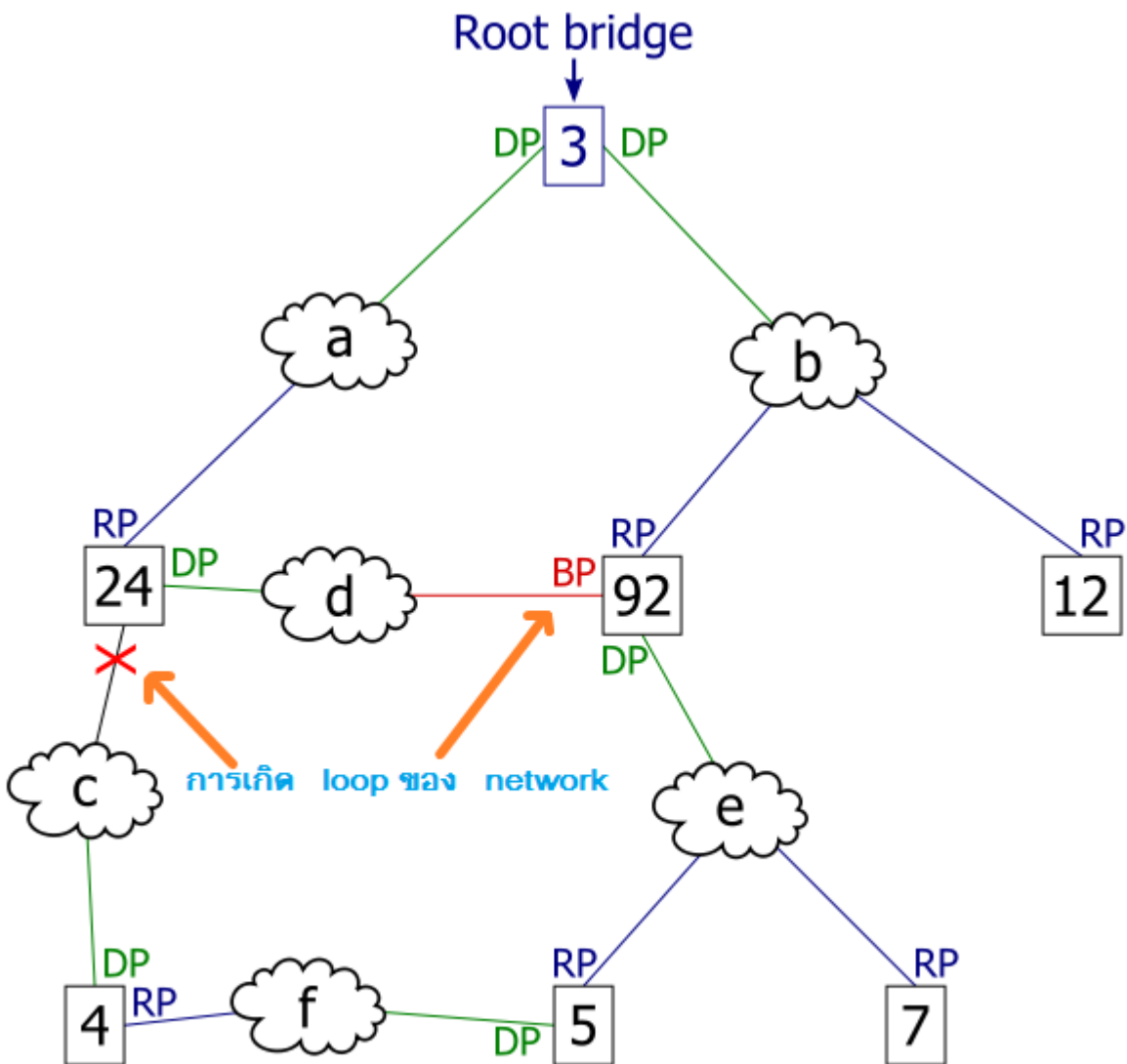
tree root

(Routing Table) loop

root

stp cost
32768
root

cost
root
hop



3-5
stp
cost (loop)

switching 3com 4500,5500,9700

log interface up/down root loop

#Jun 14 09:41:23:116 2009 4500 L2INF/2/PORT LINK STATUS CHANGE:- 1 - Trap 1.3.6.1.6.3.1.1.5.3(linkDown): portIndex is 4227706, ifAdminStatus is 1, ifOperStatus is 2

%Jun 14 09:41:23:118 2009 4500 L2INF/5/PORT LINK STATUS CHANGE:- 1 - Ethernet1/0/11 is DOWN

stp (display stp interface Ethernet 1/0/11)

[3Com-sw]display stp interface Ethernet 1/0/11

--[CIST][Port11(Ethernet1/0/11)][DISCARDING]--

Port Protocol :enabled
Port Role :CIST Designated Port
Port Priority :128
Port Cost(Dot1T) :Config=auto / Active=200000
Desg. Bridge/Port :32768.001e-c17d-7580 / 128.11
Port Edged :Config=disabled / Active=disabled
Point-to-point :Config=auto / Active=true
Transmit Limit :10 packets/hello-time
Protection Type :Loop
MSTP BPDU format :Config=auto / Active=legacy

Port Config

Digest Snooping :disabled
Num of Vlans Mapped :1
PortTimes :Hello 2s MaxAge 20s FwDly 15s MsgAge 1s
RemHop 20
BPDU Sent :14
TCN: 0, Config: 0, RST: 0, MST: 14
BPDU Received :0
TCN: 0, Config: 0, RST: 0, MST: 0

stp disable (interface stp disable)
interface
stp disable)

[3Com-sw]stp disable

%Jun 14 09:41:24:623 2009 4500 MSTP/3/STPSTOP:- 1 -STP is now disabled on the device.

display stp interface Ethernet 1/0/11

[3Com-sw]display stp interface Ethernet 1/0/11
Protocol Status :disabled
Protocol Std. :IEEE 802.1s
Version :3
CIST Bridge-Prio. :32768
MAC address :001e-c17d-7580
Max age(s) :20
Forward delay(s) :15
Hello time(s) :2
Max hops :20

[3Com-sw]save

root

ntp 3com switching



Switching HUB ntp 3com switching

ntp 3com switching

syslog syslog server Switching syslog server

ntp 3com switching

ntp 3com switching

ntp log syslog server

3Com 4500, 3com 5500

```
<3Com-sw>display clock
22:52:16 th Sat 01/15/2005
Time Zone : th add 07:00:00
```

```
<3Com-sw>clock timezone th add 07:00:00
```

```
<3Com-sw>system
[3Com-sw]ntp-service unicast-server 10.0.1.105
```

*10.0.1.105 ntp server
ntp server ntp server ntp server
"nslookup nslookup nslookup nslookup"
nslookup nslookup nslookup nslookup
nslookup nslookup nslookup nslookup
nslookup nslookup nslookup nslookup

nslookup nslookup nslookup nslookup
nslookup nslookup nslookup nslookup

```
[3Com-sw]display clock
08:41:02 th Sat 06/13/2009
Time Zone : th add 07:00:00
```

SW log syslogserver
(syslog server 192.168.10.200)

```
[3Com-sw]info-center loghost 192.168.10.200
```

log syslog server (software manageEngine
Eventlog 5
)

ManageEngine EventLog Analyzer 5 - Windows Internet Explorer

Complete View Export to :

Syslog process [Local7]'s 'Warning','Notice' events From: 2009-06-13 00:00:00
To: 2009-06-13 15:00:00

Search :

Showing : 1 to 50 of 50 Page : [1] View per page : [5](#) [10](#) [20](#) [25](#) **[50]** [75](#) [100](#) [150](#) [200](#)

HostName	Facility	Severity	Message	Time
192.168.1.10	Local7	Warning	2009 4500 %10NTP/5/NTP_LOG(l):- 1 - System leap changes from 3 to 0 after clock update.	14:02:37 Jun 13 2009
192.168.1.10	Local7	Warning	2009 4500 %10NTP/5/NTP_LOG(l):- 1 - System stratum changes from 16 to 3 after clock update.	14:02:38 Jun 13 2009
192.168.1.10	Local7	Warning	2009 4500 %10SHELL/5/CMD(l):- 1 -task:au0 ip:** user:admin command:display clock	14:02:42 Jun 13 2009
192.168.1.10	Local7	Warning	2009 4500 %10SHELL/5/CMD(l):- 1 -task:au0 ip:** user:admin command:save	14:02:48 Jun 13 2009
192.168.1.10	Local7	Warning	2009 4500 %10HWCN/5/TRAP(t):- 1 - 1.3.6.1.4.1.43.45.1.6.10.2.1(h3cCfgManEventlog) configure changed: EventIndex=6,CommandSource=1,ConfigSource=2,ConfigDestination=4	14:02:57 Jun 13 2009
192.168.1.10	Local7	Warning	2009 4500 %10HWCN/5/TRAPLOG(l):- 1 - 1.3.6.1.4.1.43.45.1.6.10.2.1(h3cCfgManEventlog) configure changed: EventIndex=6,CommandSource=1,ConfigSource=2,ConfigDestination=4	14:02:57 Jun 13 2009
192.168.1.10	Local7	Warning	2009 4500 %10SHELL/5/CMD(l):- 1 -task:au0 ip:** user:admin command:display clock	14:03:09

save

[3Com-sw]save

Alcatel

Data Mapping Moodle



LDAP moodle Active Directory username password Active Directory

e-mail moodle Data Mappings

Data Mappings moodle MS Active Directory 2003 server () 3

First Name

Surname

Email address e-mail

AD login

LDAP Server DATA MAPPING

First Name -> givenName

Surname -> sn

Email address -> mail

DATA MAPPING

First name	<input type="text" value="givenName"/>	Update local	<input type="text" value="On creation"/>	Update external	<input type="text" value="Never"/>	Lock value	<input type="text" value="Unlocked if empty"/>	These fields are optional. You can choose to pre-fill some Moodle user fields with information from the LDAP fields that you specify here. If you leave these fields blank, then nothing will be transferred from LDAP and Moodle defaults will be used instead.
Surname	<input type="text" value="sn"/>	Update local	<input type="text" value="On creation"/>	Update external	<input type="text" value="Never"/>	Lock value	<input type="text" value="Unlocked if empty"/>	In either case, the user will be able to edit all of these fields after they log in. Update local: If enabled, the field will be updated (from external auth) every time the user logs in or there is a user synchronization. Fields set to update locally should be locked.
Email address	<input type="text" value="mail"/>	Update local	<input type="text" value="On creation"/>	Update external	<input type="text" value="Never"/>	Lock value	<input type="text" value="Unlocked if empty"/>	Lock value: If enabled, will prevent Moodle users and admins from editing the field directly. Use this option if you are maintaining this data in the external auth system. Update external: If enabled, the external auth will be

** LDAP LDAP

Active Directory Active Directory (user moodle Profile user moodle)

ชื่อ / นามสกุล	อีเมล	จังหวัด	ประเทศ	เข้ามาครั้งสุดท้ายเมื่อ	
givenName + sn	mail	chiangmai	ไทย	15 วินาที	แก้ไข
Prasert Teppap	teppap@rmutl.ac.th			9 ชั่วโมง 35 นาที	แก้ไข ลบ
weerasak panyarach	Weerasak@rmutl.ac.th	เชียงใหม่	ไทย	7 ชั่วโมง 23 นาที	แก้ไข ลบ
กฤษณ์นต์ ศิริไพบุลย์	kritsanant_si50@live.rmutl.ac.th			3 ชั่วโมง 43 นาที	แก้ไข ลบ
กษิต ขอนกลาง	kasit_ko50@live.rmutl.ac.th			3 นาที 37 วินาที	แก้ไข ลบ
กิตติกุล บุญมหาธนาก	kittikul_bo50@live.rmutl.ac.th	เชียงใหม่	ไทย	7 ชั่วโมง 37 นาที	แก้ไข ลบ
กิตติพงษ์ หน่อใจ	kittipong_no50@live.rmutl.ac.th			23 ชั่วโมง 55 นาที	แก้ไข ลบ
กิตติพงษ์ สิงห์วัฒนศิริ	kittipong_si49@live.rmutl.ac.th			7 ชั่วโมง 32 นาที	แก้ไข ลบ
กุลธิดา เจริญเมือง	kultida@rmutl.ac.th	เชียงใหม่	ไทย	3 ชั่วโมง 54 นาที	แก้ไข ลบ
คเชน เชื้อพล	kachen_ch50@live.rmutl.ac.th			20 ชั่วโมง 57 นาที	แก้ไข ลบ

Users → Accounts → Browse list of users

E-Mail AD

http://www.computerperformance.co.uk/Logon/LDAP_attributes_active_directory.htm

CN – Common Name	CN=Guy Thomas. Actually, this LDAP attribute is made up from givenName joined to SN.
description	What you see in Active Directory Users and Computers. Not to be confused with displayName on the Users property sheet.
displayName	displayName = Guy Thomas. If you script this property, be sure you understand which field you are configuring. DisplayName can be confused with CN or description.

DN – also distinguishedName	DN is simply the most important LDAP attribute. CN=Jay Jamieson, OU=Newport,DC=cp,DC=com
givenName	Firstname also called Christian name
homeDrive	Home Folder : connect. Tricky to configure
name	name = Guy Thomas. Exactly the same as CN.
objectCategory	Defines the Active Directory Schema category. For example, objectClass = Person
objectClass	objectClass = User. Also used for Computer, organizationalUnit, even container. Important top level container.
physicalDeliveryOfficeName	Office! on the user's General property sheet
profilePath	Roaming profile path: connect. Trick to set up
sAMAccountName	sAMAccountName = guyt. Old NT 4.0 logon name, must be unique in the domain. Can be confused with CN.
SN	SN = Thomas. This would be referred to as last name or surname.
userAccountControl	Used to disable an account. A value of 514 disables the account, while 512 makes the account ready for logon.

userPrincipalName	userPrincipalName = guyt@CP.com Often abbreviated to UPN, and looks like an email address. Very useful for logging on especially in a large Forest. Note UPN must be unique in the forest.
-------------------	---

Windows 2008 Server / UAC



Windows 2008 Server UAC (User Account Control) is a security feature that prevents unauthorized changes to the system. It is designed to protect the system from malware and other threats. UAC is enabled by default on Windows 2008 Server. It is a security feature that prevents unauthorized changes to the system. It is designed to protect the system from malware and other threats. UAC is enabled by default on Windows 2008 Server.

UAC (User Account Control) is a security feature that prevents unauthorized changes to the system. It is designed to protect the system from malware and other threats. UAC is enabled by default on Windows 2008 Server.

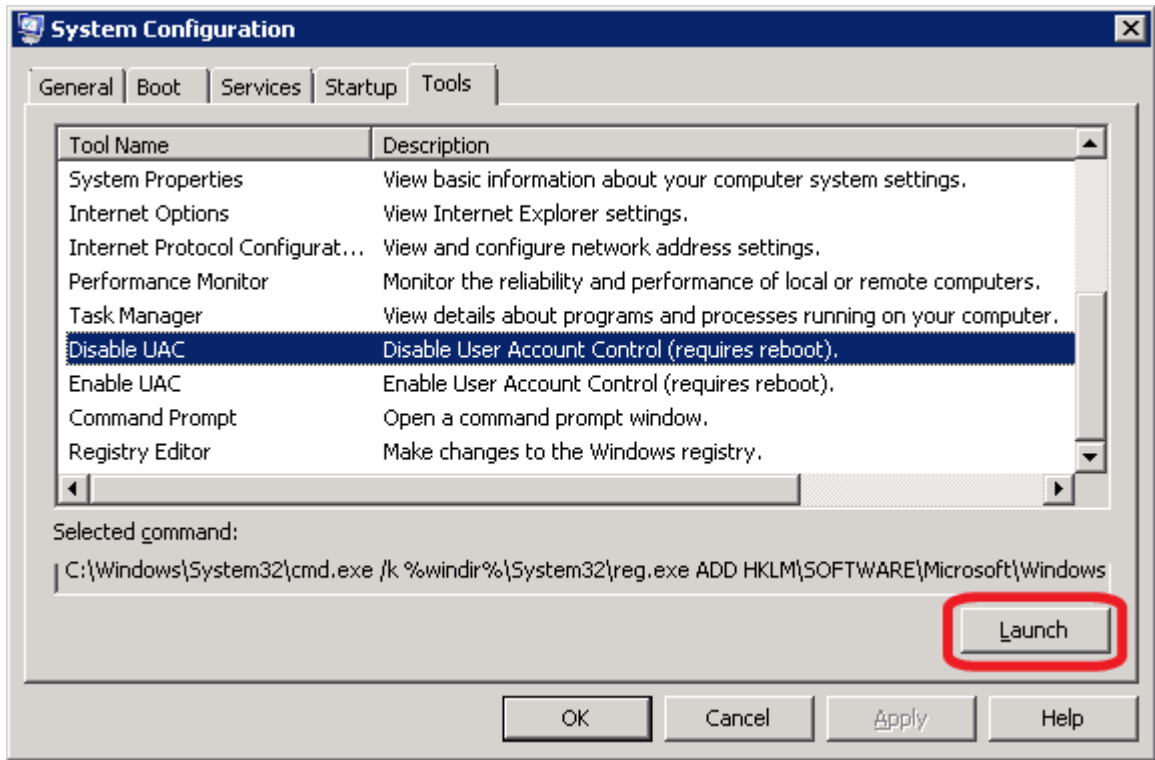
Desktop (vista , se7en) Control Panel windows 2008 server (Domain Controller) User Account Domain Controller ()

add account windows live @edu Power Shell v2

registry registry registry UAC control panel user account google UAC

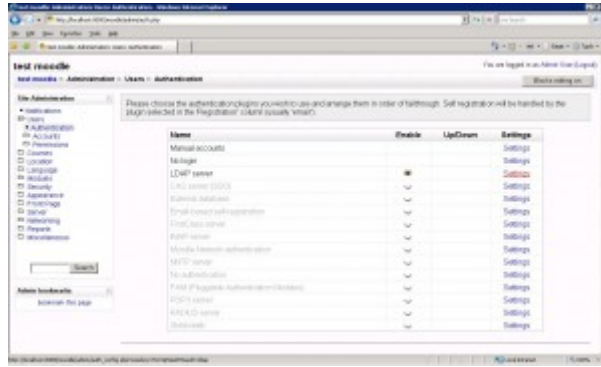
- start -> run -> msconfig

tools Tool Name Disable UAC Tool Name Launch



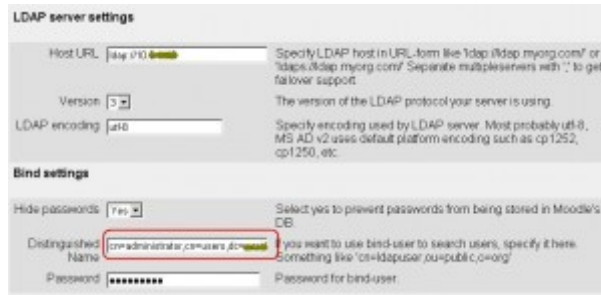
Launch The operation completed successfully.

UAC Tool Name Enable UAC Launch



LDAP Server Settings

- Users → Authentication
- LDAP Server Settings
- Settings



LDAP Server Settings (Host URL, Version, LDAP encoding, Bind settings, Distinguished Name, Password)

LDAP Server Settings

- Host URL : ldap://192.168.1.10
- Version 3
- LDAP Encoding utf-8

version 2 cp 1252
()

- **LDAP Encoding : utf-8**

- **Bind Settings**

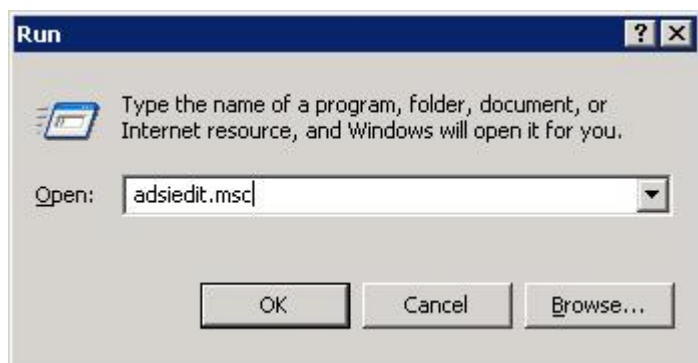
- **Hide Password** moodle moodle AD ()

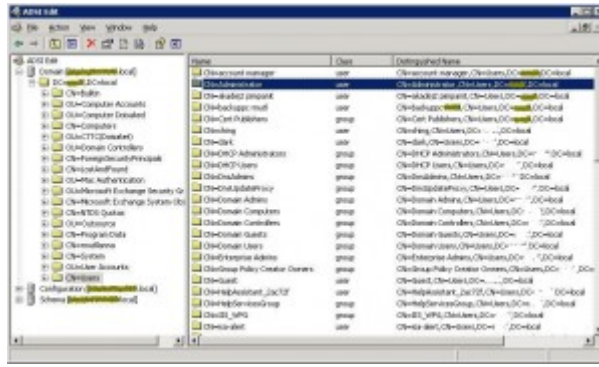
- **Hide Password : Yes**

- **Distinguished name** AD username Domain Admin cn,dc

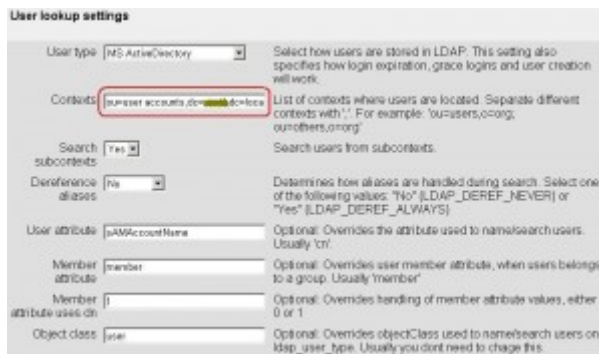
- **AD** Active Directory Service Interfaces adsi

- **start -> run -> adsiedit.msc**





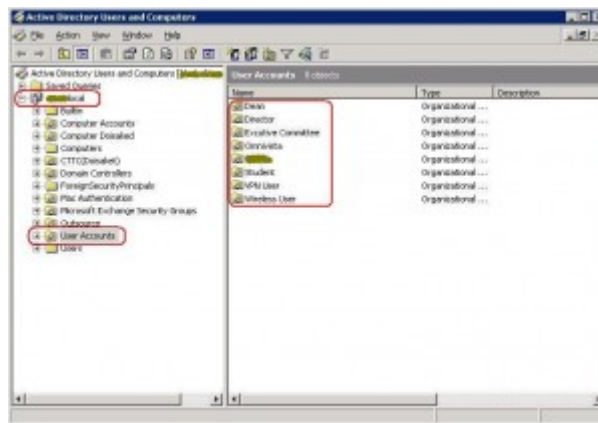
- **ADSI Edit** **user administrator** **Distinguished name (cn=administrator,cn=users,dc=university,dc=local)**
- Distinguished name : cn=administrator,cn=users,dc=university,dc=local**
- Password** **user administrator** **Distinguished name administrator**
- Password : *******



- User lookup settings**
- User type** **Directory Service** **AD**
- User type : MsActiveDirectory**

- Contexts are Organizational Unit (OU) (Organizational Unit (OU) is a container for users, groups, and other objects in Active Directory user and computer) are used to organize users and groups in Active Directory user and computer. moodle uses Active Directory user and computer OU to store user accounts. OU is a container for users, groups, and other objects in Active Directory user and computer.

Contexts : ou=user accounts,dc=university,dc=local



- Search Subcontexts are Organizational Unit (OU) (Organizational Unit (OU) is a container for users, groups, and other objects in Active Directory user and computer) are used to search for users and groups in Active Directory user and computer. OU is a container for users, groups, and other objects in Active Directory user and computer. User Accounts (Organizational Unit (OU) is a container for users, groups, and other objects in Active Directory user and computer)

Search Subcontexts : Yes

- Dereliction aliases are used to search for users and groups in Active Directory user and computer. (Organizational Unit (OU) is a container for users, groups, and other objects in Active Directory user and computer)

Dereliction aliases : No

- User Attribute are used to search for users and groups in Active Directory user and computer. AD uses sAMAccountName (Organizational Unit (OU) is a container for users, groups, and other objects in Active Directory user and computer) to search for users and groups. sAMAccountName is a user attribute. **200**

User Attribute : sAMAccountName

- Member Attribute are used to search for users and groups in Active Directory user and computer.

▪ **Member Attribute : member**

▪ Member Attribute user dn [LDAP] [LDAP].../...
[LDAP] user [LDAP]...
[LDAP] Distinguished name [LDAP]...
[LDAP]

▪ **Member Attribute user dn : 1** **[LDAP]...
[LDAP] user [LDAP]

▪ Object Class [LDAP] [LDAP]...
[LDAP] ad [LDAP] username [LDAP]
user

▪ **Object Class : user**

[LDAP]...
[LDAP] **Save change** [LDAP]

[LDAP] logout [LDAP]

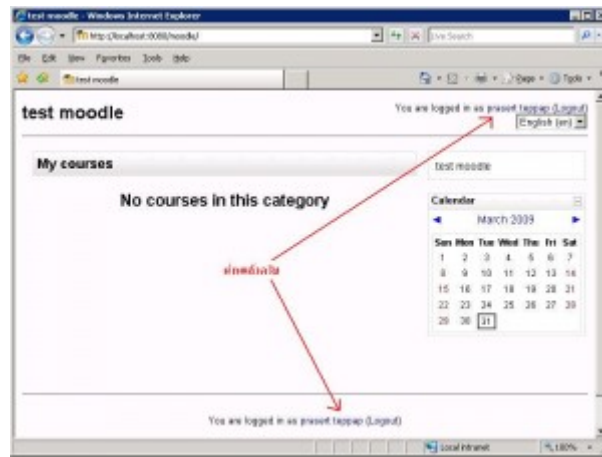
[LDAP] login [LDAP] username
[LDAP] password [LDAP] ad

[LDAP] [LDAP] ([LDAP]
[LDAP]) [LDAP]
[LDAP]



[LDAP] [LDAP]
[LDAP] [LDAP]





username password