

Grave Mint amd64



Grave Mint amd64
 Grave Mint amd64
 Grave Mint amd64
 Grave Mint amd64
 (Alt+Space)

Grave Mint amd64
 Linux (mint7 ubuntu 8.10)
 Grave Mint amd64
 Grave Mint amd64

Open Source Grave Mint amd64
 xkb-data-grave.deb
 i386
 32 bit
 amd64
 amd64

File Help

Package: xkb-data-grave Install Package

Status: **Error: Wrong architecture 'i386'**

Description Details Included Files

Grave Switches layout with X11 keyboard system(XKB).
 This package Develop for Ubuntu 8.10 (Intrepid Ibex).

1. Download the archive file from the link below (download id="29") and extract it.

 2. Move the extracted files to the Desktop.

 3. Open Terminal and run the following commands:

1. Open Terminal and run the following command to download the archive file:

`wget http://www.teppap.com/download/id/29/`

 2. Move the extracted files to the Desktop:

`mv grave-key.tar.gz Desktop`

 3. Extract the archive file:

`tar -xvf grave-key.tar.gz`

 4. Move the extracted files to the Desktop:

`mv grave-key Desktop`

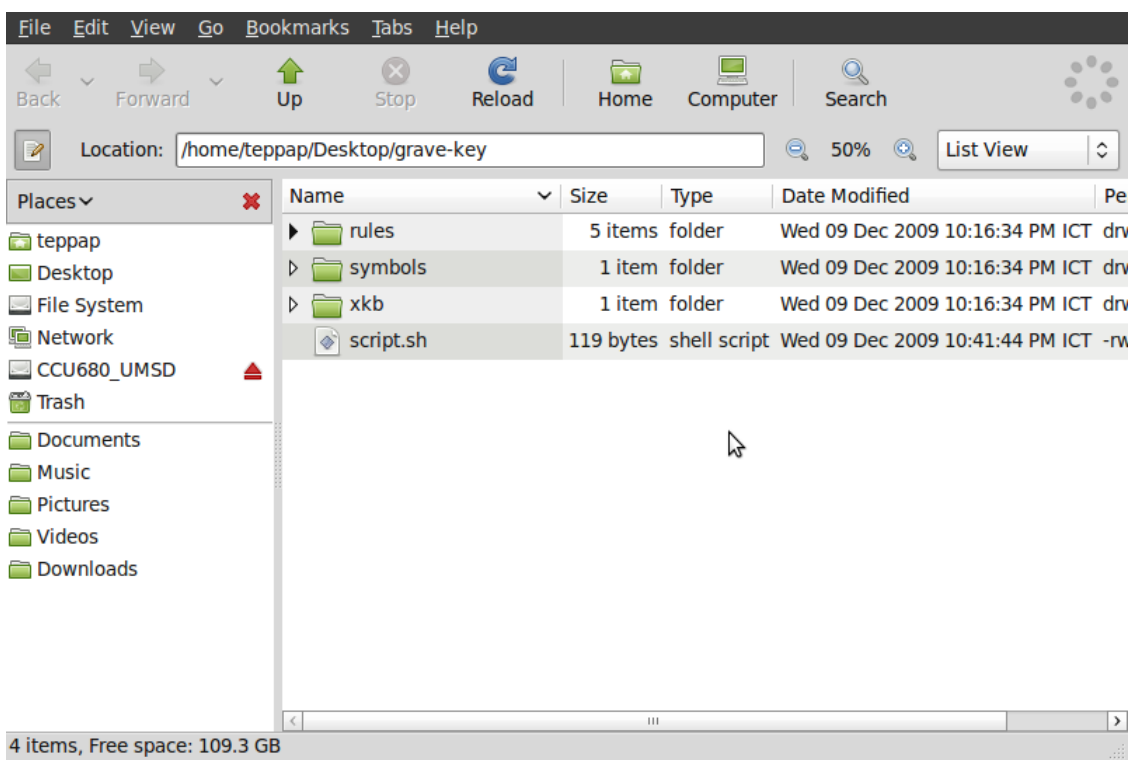
 5. Open Terminal and run the following command:

`cd /home/teppap/Desktop/grave-key/`

 6. Run the script:

`./script.sh`

 7. Press Ctrl+C to stop the script.



- Open Terminal and run the following command to become root:

`su -`
- Move to the Desktop directory and run the following command:

`cd /home/teppap/Desktop/grave-key/`

`ls -la`
- Run the script:

`./script.sh`

`chmod 755 script.sh`
- Press Ctrl+C to stop the script.

/script.sh

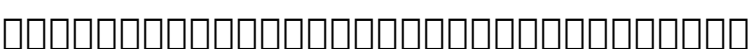
```
File Edit View Terminal Help

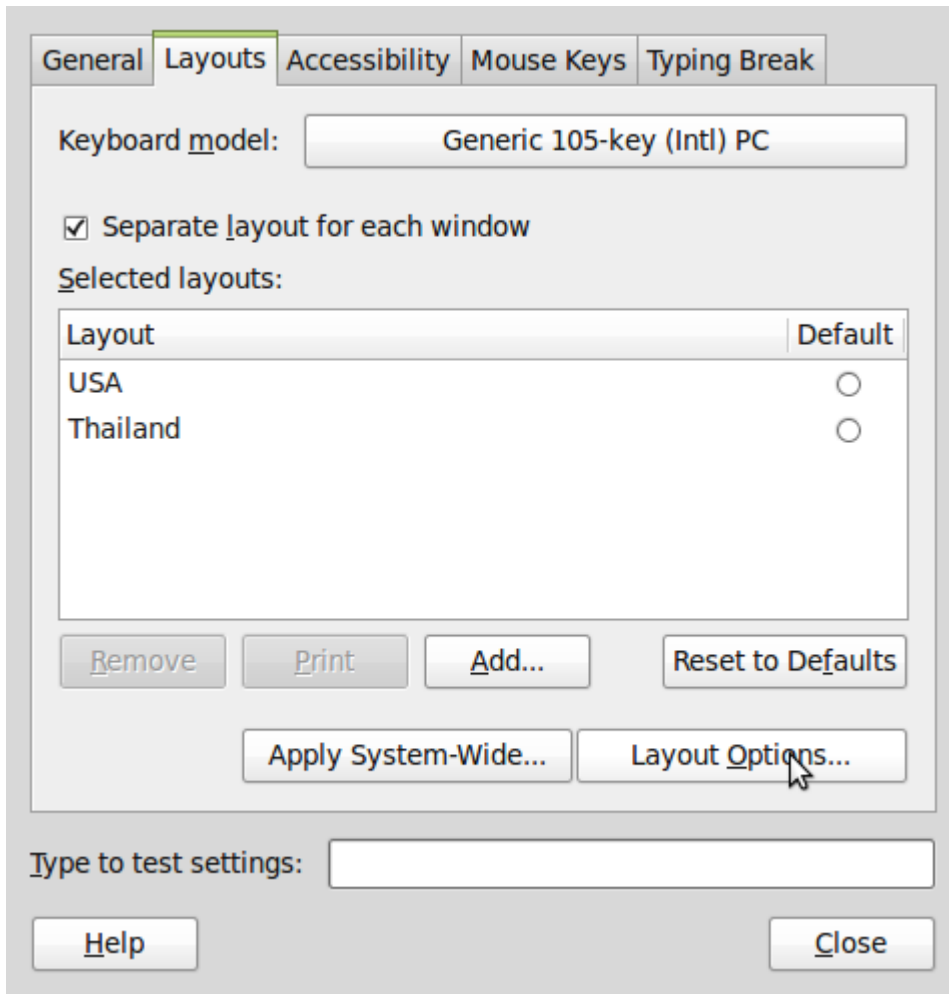
teppap@prasert-mint ~ $ su -
Password:

( Today is what happened to yesterday. )
-----
0
0

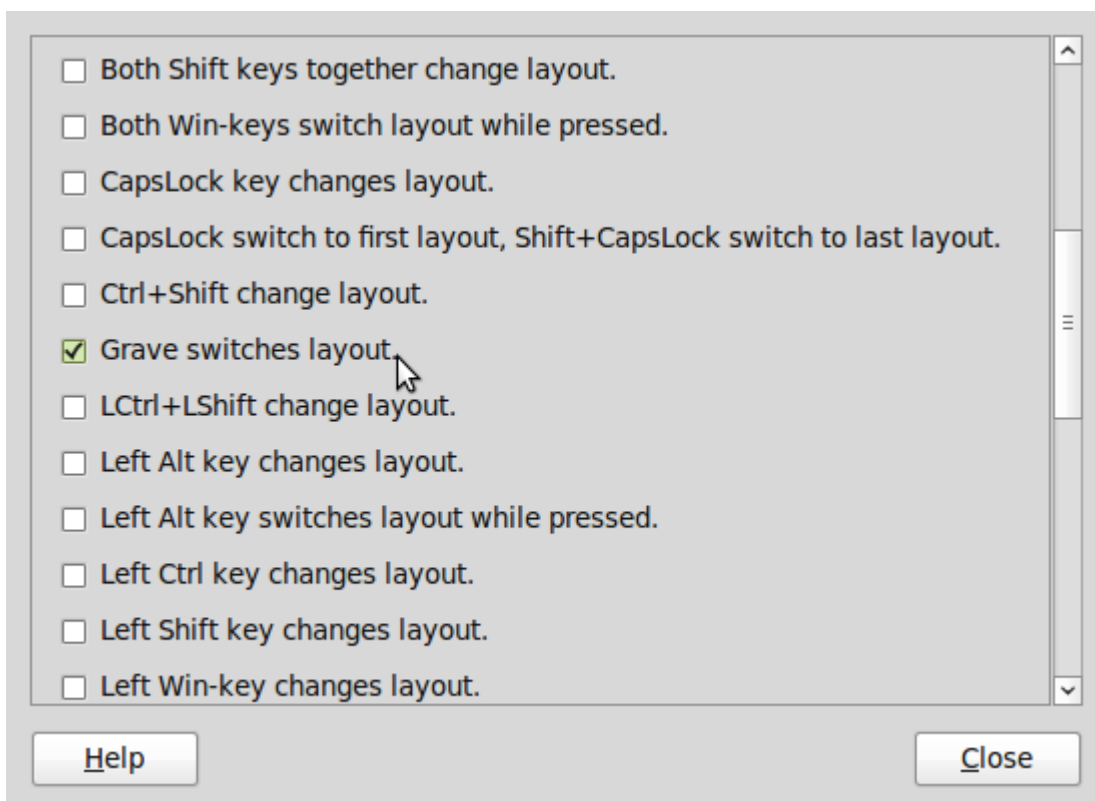
{~._.~}
( Y )
()~*~()
( )-( )

prasert-mint ~ # cd /home/teppap/Desktop/grave-key/
prasert-mint grave-key # ls
rules script.sh symbols xkb
prasert-mint grave-key # chmod 755 script.sh
prasert-mint grave-key # ./script.sh
prasert-mint grave-key # █
```

5.  menu → Control Center → Keyboard → Layouts → Layouts Options



6. Grave switches layout



7.0 (Linux Mint 7 amd64) (Linux Mint 8) (Linux Mint 9) (Linux Mint 10) (Linux Mint 11) (Linux Mint 12) (Linux Mint 13) (Linux Mint 14) (Linux Mint 15) (Linux Mint 16) (Linux Mint 17) (Linux Mint 18) (Linux Mint 19) (Linux Mint 20) (Linux Mint 21) (Linux Mint 22) (Linux Mint 23) (Linux Mint 24) (Linux Mint 25) (Linux Mint 26) (Linux Mint 27) (Linux Mint 28) (Linux Mint 29) (Linux Mint 30) (Linux Mint 31) (Linux Mint 32) (Linux Mint 33) (Linux Mint 34) (Linux Mint 35) (Linux Mint 36) (Linux Mint 37) (Linux Mint 38) (Linux Mint 39) (Linux Mint 40) (Linux Mint 41) (Linux Mint 42) (Linux Mint 43) (Linux Mint 44) (Linux Mint 45) (Linux Mint 46) (Linux Mint 47) (Linux Mint 48) (Linux Mint 49) (Linux Mint 50) (Linux Mint 51) (Linux Mint 52) (Linux Mint 53) (Linux Mint 54) (Linux Mint 55) (Linux Mint 56) (Linux Mint 57) (Linux Mint 58) (Linux Mint 59) (Linux Mint 60) (Linux Mint 61) (Linux Mint 62) (Linux Mint 63) (Linux Mint 64) (Linux Mint 65) (Linux Mint 66) (Linux Mint 67) (Linux Mint 68) (Linux Mint 69) (Linux Mint 70) (Linux Mint 71) (Linux Mint 72) (Linux Mint 73) (Linux Mint 74) (Linux Mint 75) (Linux Mint 76) (Linux Mint 77) (Linux Mint 78) (Linux Mint 79) (Linux Mint 80) (Linux Mint 81) (Linux Mint 82) (Linux Mint 83) (Linux Mint 84) (Linux Mint 85) (Linux Mint 86) (Linux Mint 87) (Linux Mint 88) (Linux Mint 89) (Linux Mint 90) (Linux Mint 91) (Linux Mint 92) (Linux Mint 93) (Linux Mint 94) (Linux Mint 95) (Linux Mint 96) (Linux Mint 97) (Linux Mint 98) (Linux Mint 99) (Linux Mint 100)