

LDAP Moodle



Moodle Open Source LMS (Learning Management System) moodle

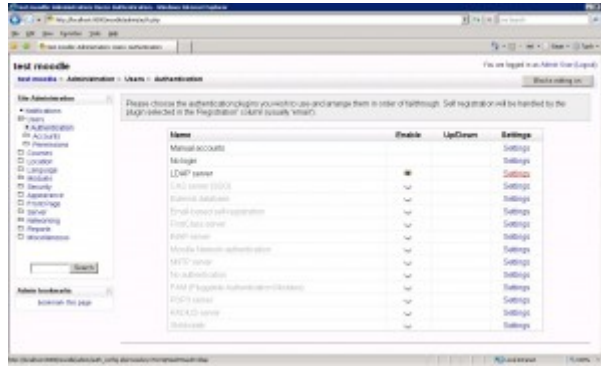
username password moodle LDAP Moodle

extentions ldap moodle

- DC (Active Directory)
- Moodle
- moodle

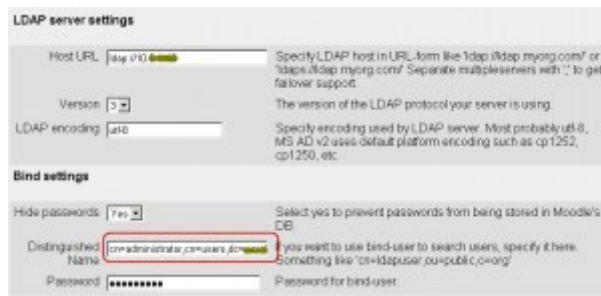
moodle

- moodle username admin moodle



LDAP Server Settings

- Users → Authentication
- LDAP Server Settings
- Settings



LDAP Server Settings (3)

LDAP Server Settings

- Host URL : ldap://192.168.1.10
- Version 3
- LDAP Encoding utf-8

version 2 cp 1252
()

- **LDAP Encoding : utf-8**

- **Bind Settings**

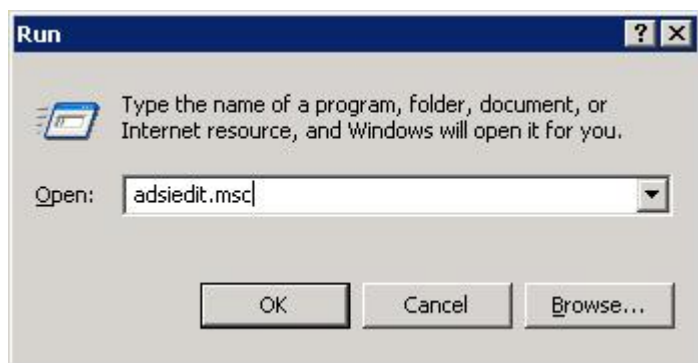
- **Hide Password** moodle moodle AD ()

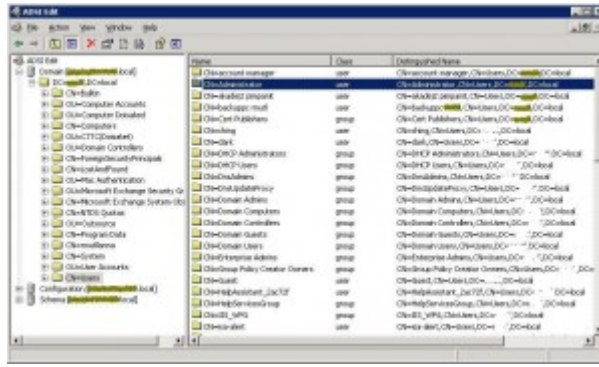
- **Hide Password : Yes**

- **Distinguished name** AD username Domain Admin cn,dc

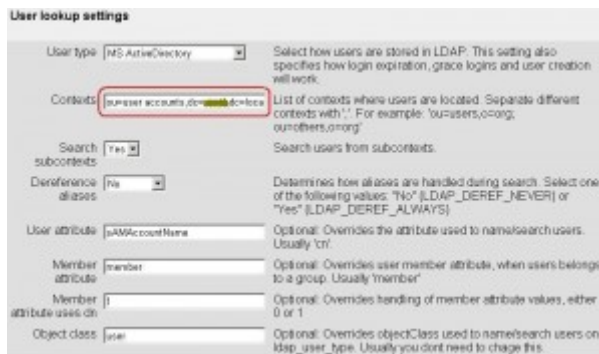
- **AD** Active Directory Service Interfaces adsi

- **start -> run -> adsiedit.msc**





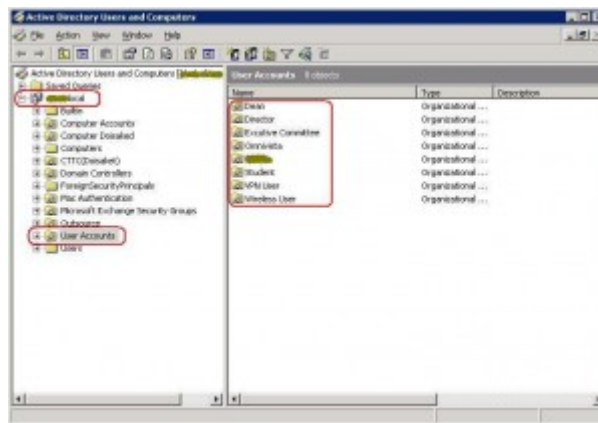
- **ADSI Edit** **user administrator** **Distinguished name (cn=administrator,cn=users,dc=university,dc=local)**
- Distinguished name : cn=administrator,cn=users,dc=university,dc=local**
- Password** **user administrator** **Distinguished name** **administrator**
- Password : *******



- User lookup settings**
- User type** **Directory Service** **AD**
- User type : MsActiveDirectory**

- Contexts are Organizational Unit (OU) containers (containers) that contain objects in Active Directory user and computer. moodle containers are containers in Active Directory user and computer. OU containers are containers in Active Directory user and computer.

Contexts : ou=user accounts,dc=university,dc=local



- Search Subcontexts are OU containers (containers) that contain objects in Active Directory user and computer. Contexts (containers) are containers in Active Directory user and computer. OU containers are containers in Active Directory user and computer. User Accounts are containers in Active Directory user and computer.
 - Search Subcontexts : Yes**
- Dereliction aliases are containers (containers) that contain objects in Active Directory user and computer. (containers) are containers in Active Directory user and computer.
 - Dereliction aliases : No**
- User Attribute are containers (containers) that contain objects in Active Directory user and computer. User containers are containers in Active Directory user and computer. AD containers are containers in Active Directory user and computer. sAMAccountName containers (containers) are containers in Active Directory user and computer. cn containers are containers in Active Directory user and computer. sAMAccountName containers are containers in Active Directory user and computer. **200** containers are containers in Active Directory user and computer.
 - User Attribute : sAMAccountName**
- Member Attribute are containers (containers) that contain objects in Active Directory user and computer.

▪ **Member Attribute : member**

▪ Member Attribute user dn [LDAP] [LDAP].../...
[LDAP] user [LDAP]...
[LDAP] Distinguished name [LDAP]...
[LDAP]

▪ **Member Attribute user dn : 1** **[LDAP]...
[LDAP] user [LDAP]

▪ Object Class [LDAP] [LDAP]...
[LDAP] ad [LDAP] username [LDAP]
user

▪ **Object Class : user**

[LDAP]...
[LDAP] **Save change** [LDAP]

[LDAP] logout [LDAP]

[LDAP] login [LDAP] username
[LDAP] password [LDAP] ad

[LDAP] ([LDAP]
[LDAP]) [LDAP]
[LDAP]



[LDAP] [LDAP]...
[LDAP] [LDAP]



